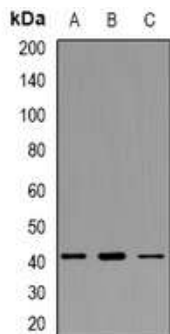


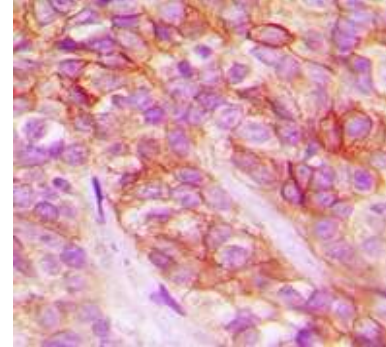
AGTR1 Antibody

CATALOG NO:	A1149-100
ALTERNATIVE NAMES:	AGTR1A; AGTR1B; AT2R1; AT2R1B; Type-1 angiotensin II receptor; AT1AR; AT1BR; Angiotensin II type-1 receptor; AT1
AMOUNT:	100 µl
IMMUNOGEN:	KLH-conjugated synthetic peptide encompassing a sequence within the center region of human AT1
HOST/ISOTYPE:	Rabbit IgG
CLONALITY:	Polyclonal
SPECIFICITY:	Recognizes endogenous levels of AGTR1 protein
SPECIES REACTIVITY:	Human, Mouse, Rat
PURIFICATION:	The antibody was purified by affinity chromatography
FORM:	Liquid
FORMULATION:	Supplied in 0.42% Potassium phosphate; 0.87% Sodium chloride; pH 7.3; 30% glycerol and 0.01% sodium azide
STORAGE CONDITIONS:	Shipped at 4°C. For long term storage store at -20°C in small aliquots to prevent freeze-thaw cycles
DESCRIPTION:	Receptor for angiotensin II. Mediates its action by association with G proteins that activate a phosphatidylinositol-calcium second messenger system
APPLICATION:	WB; 1:500 – 1:2000, IH; 1:50 – 1:200, IF/IC; 1:50 – 1:100

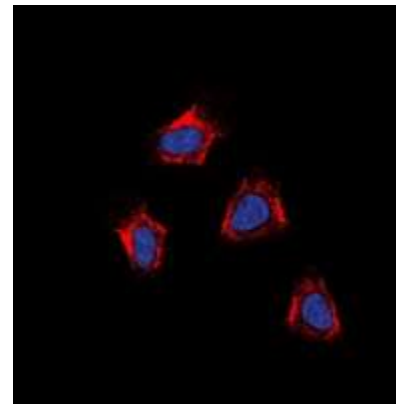
Note: This information is only intended as a guide. The optimal dilutions must be determined by the user.



Western blot analysis of AT1 expression in HepG2 (A); K562 (B); RAW264.7 (C) whole cell lysates



Immunohistochemical analysis of AT1 staining in human breast cancer formalin fixed paraffin embedded tissue section: The section was pre-treated using heat mediated antigen retrieval with sodium citrate buffer (pH 6.0). The section was then incubated with the antibody at room temperature and detected using an HRP conjugated compact polymer system. DAB was used as the chromogen. The section was then counterstained with haematoxylin and mounted with DPX.



Immunofluorescent analysis of AT1 staining in K562 cells. Formalin-fixed cells were permeabilized with 0.1% Triton X-100 in TBS for 5-10 minutes and blocked with 3% BSA-PBS for 30 minutes at room temperature. Cells were probed with the primary antibody in 3% BSA-PBS and incubated overnight at 4 deg C in a humidified chamber. Cells were washed with PBST and incubated with a DyLight 594-conjugated secondary antibody (red) in PBS at room temperature in the dark. DAPI was used to stain the cell nuclei (blue).

RELATED PRODUCTS:

- ANGPT1 Antibody (CT) (Cat. No. 6760-100)
- ANGPT2 Antibody (CT) (Cat. No. 6759-100)
- ANGPTL1 Antibody (NT) (Cat. No. 6761-100)
- Endostatin Antibody (Cat. No. 5799-100)
- Leptin Receptor Antibody (Cat. No. 5582-100)
- PDGFR Antibody (Clone # 275CT1) (Cat. No. 6787-50)

FOR RESEARCH USE ONLY! Not to be used on humans.