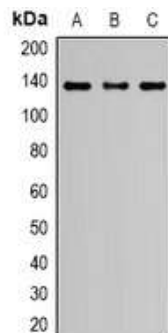


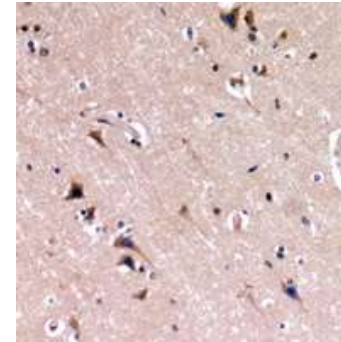
Nephrin Antibody

| | |
|----------------------------|--|
| CATALOG NO: | A1150-100 |
| ALTERNATIVE NAMES: | NPHN; Nephrin; Renal glomerulus-specific cell adhesion receptor |
| AMOUNT: | 100 µl |
| IMMUNOGEN: | KLH-conjugated synthetic peptide encompassing a sequence within the C-term region of human Nephrin |
| HOST/ISOTYPE: | Rabbit IgG |
| CLONALITY: | Polyclonal |
| SPECIFICITY: | Recognizes endogenous levels of Nephrin protein |
| SPECIES REACTIVITY: | Human, Mouse, Rat |
| PURIFICATION: | The antibody was purified by affinity chromatography |
| FORM: | Liquid |
| FORMULATION: | Supplied in 0.42% Potassium phosphate; 0.87% Sodium chloride; pH 7.3; 30% glycerol and 0.01% sodium azide |
| STORAGE CONDITIONS: | Shipped at 4°C. For long term storage store at -20°C in small aliquots to prevent freeze-thaw cycles |
| DESCRIPTION: | Seems to play a role in the development or function of the kidney glomerular filtration barrier. Regulates glomerular vascular permeability. May anchor the podocyte slit diaphragm to the actin cytoskeleton. Plays a role in skeletal muscle formation through regulation of myoblast fusion |
| APPLICATION: | WB; 1:500 – 1:2000, IH; 1:50 – 1:200 |

Note: This information is only intended as a guide. The optimal dilutions must be determined by the user.



Western blot analysis of Nephrin expression in HeLa (A), HEK293T (B), PC12 (C) whole cell lysates



Immunohistochemical analysis of Nephrin staining in human brain formalin fixed paraffin embedded tissue section. The section was pre-treated using heat mediated antigen retrieval with sodium citrate buffer (pH 6.0). The section was then incubated with the antibody at room temperature and detected using an HRP conjugated compact polymer system. DAB was used as the chromogen. The section was then counterstained with haematoxylin and mounted with DPX.

RELATED PRODUCTS:

- Anti-CD146 Rabbit Monoclonal Antibody (**Cat. No. A1122-50**)
- CD146/MCAM Antibody (CT) (**Cat. No. 6801-100**)
- Anti-CD31 (PECAM-1) Rabbit Monoclonal Antibody (**Cat. No. A1123-50**)
- Endostatin Antibody (**Cat. No. 5799-100**)
- Leptin Receptor Antibody (**Cat. No. 5582-100**)
- PDGFR Antibody (Clone # 275CT1) (**Cat. No. 6787-50**)

FOR RESEARCH USE ONLY! Not to be used on humans.