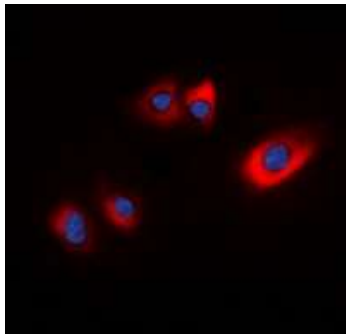


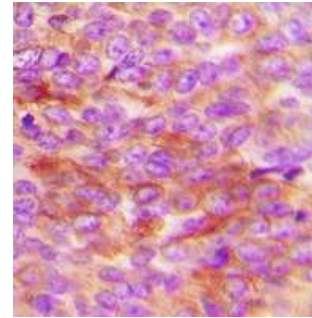
## Phospho-HSP20 (Ser16) Antibody

<b>CATALOG NO:</b>	A1153-100
<b>ALTERNATIVE NAMES:</b>	Heat shock protein beta-6; HspB6; Heat shock 20 kDa-like protein p20
<b>AMOUNT:</b>	100 µl
<b>IMMUNOGEN:</b>	KLH-conjugated synthetic peptide encompassing a sequence within the N-term region of human HSP20
<b>HOST/ISOTYPE:</b>	Rabbit IgG
<b>CLONALITY:</b>	Polyclonal
<b>SPECIFICITY:</b>	Recognizes endogenous levels of HSP20 (pS16) protein
<b>SPECIES REACTIVITY:</b>	Human, Mouse and Rat
<b>PURIFICATION:</b>	The antibody was purified by affinity chromatography
<b>FORM:</b>	Liquid
<b>FORMULATION:</b>	Supplied in 0.42% Potassium phosphate; 0.87% Sodium chloride; pH 7.3; 30% glycerol and 0.01% sodium azide
<b>STORAGE CONDITIONS:</b>	Shipped at 4°C. For long term storage store at -20°C in small aliquots to prevent freeze-thaw cycles
<b>DESCRIPTION:</b>	Activation of cyclic nucleotide-dependent signaling pathways leads to phosphorylation of the small heat shock-related protein, HSP20, on serine 16, and relaxation of vascular smooth muscle.
<b>APPLICATION:</b>	WB; 1:500 – 1:2000, IHC; 1:50 – 1:200, IF/IC; 1:50 – 1:100

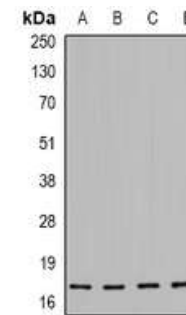
**Note:** This information is only intended as a guide. The optimal dilutions must be determined by the user.



Immunofluorescent analysis of HSP20 (pS16) staining in HEK293T cells



Immunohistochemical analysis of HSP20 (pS16) staining in human breast cancer formalin fixed paraffin embedded tissue section.



Western blot analysis of HSP20 (pS16) expression in MCF7 (A); HEK293 (B); NIH3T3 (C); H9C2 (D) whole cell lysates.

### RELATED PRODUCTS:

- Heat Shock Protein 20, human recombinant (Cat. No. 4847-10)
- Heat Shock Protein 22, human recombinant (Cat. No. 4850-10)
- Hsp105 Antibody (Cat. No. 3390-100)
- Hsp27 Antibody (Cat. No. 3092-100)
- Hsp47 Antibody (Cat. No. 3496-100)
- Hsp60 Antibody (Cat. No. 3094R-100)
- Hsp70 Antibody (Cat. No. 3097-100)
- Hsp90 Antibody (Cat. No. 3389-100)

**FOR RESEARCH USE ONLY! Not to be used on humans.**