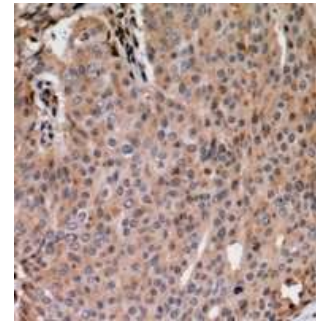


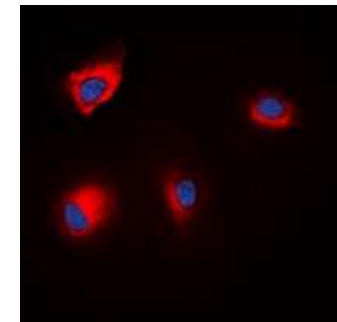
Phospho-ANAPC1 (Ser688) Antibody

CATALOG NO:	A1156-100
ALTERNATIVE NAMES:	TSG24, Anaphase-promoting complex subunit 1, APC1, Cyclosome subunit 1, Mitotic checkpoint regulator, Testis-specific gene 24 protein
AMOUNT:	100 µl
IMMUNOGEN:	KLH-conjugated synthetic peptide encompassing a sequence within the center region of human ANAPC1
HOST/ISOTYPE:	Rabbit IgG
CLONALITY:	Polyclonal
SPECIFICITY:	Recognizes endogenous levels of ANAPC1 (pS688) protein
SPECIES REACTIVITY:	Human and Mouse
PURIFICATION:	The antibody was purified by affinity chromatography
FORM:	Liquid
FORMULATION:	Supplied in 0.42% Potassium phosphate; 0.87% Sodium chloride; pH 7.3; 30% glycerol and 0.01% sodium azide
STORAGE CONDITIONS:	Shipped at 4°C. For long term storage store at -20°C in small aliquots to prevent freeze-thaw cycles
DESCRIPTION:	Component of the anaphase promoting complex/cyclosome (APC/C), a cell cycle-regulated E3 ubiquitin ligase that controls progression through mitosis and the G1 phase of the cell cycle. The APC/C complex acts by mediating ubiquitination and subsequent degradation of target proteins: it mainly mediates the formation of 'Lys-11'-linked polyubiquitin chains and, to a lower extent, the formation of 'Lys-48'- and 'Lys-63'-linked polyubiquitin chains.
APPLICATION:	WB; 1:500 – 1:2000, IHC; 1:50 – 1:200, IF/IC; 1:50 – 1:100

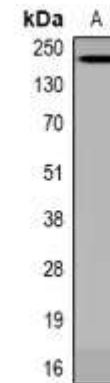
Note: This information is only intended as a guide. The optimal dilutions must be determined by the user.



Immunohistochemical analysis of ANAPC1 (pS688) staining in human breast cancer formalin fixed paraffin embedded tissue section.



Immunofluorescent analysis of ANAPC1 (pS688) staining in HEK293T cells



Western blot analysis of ANAPC1 (pS688) expression in HEK293 LPS-treated (A) whole cell lysates

RELATED PRODUCTS:

- Nucleophosmin Antibody (Cat. No. 6663-100)
- Nucleophosmin (hNPM), human recombinant (Cat. No. 7258-20, 100, -1000)
- NPM Antibody (Cat. No. 3425-100)
- Histone Protein (Cat. No. 1136-10)
- Histone H2A (1-129 aa), Xenopus recombinant (Cat. No. 7668-100, -250)
- Histone H2B (1-123 aa), Xenopus recombinant (Cat. No. 7669-100, -250)
- Histone H3 (1-136 aa), Human recombinant (Cat. No. 7670-100, -250)

FOR RESEARCH USE ONLY! Not to be used on humans.