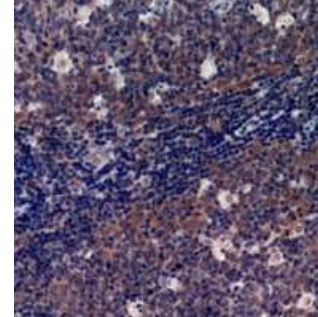
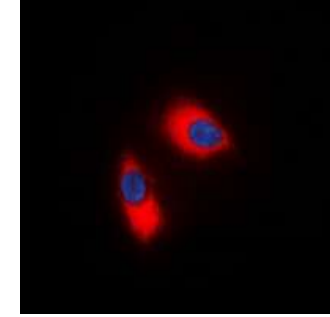


NCF1 Antibody

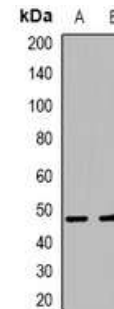
CATALOG NO:	A1160-100
ALTERNATIVE NAMES:	NOXO2, SH3PXD1A, Neutrophil cytosol factor 1, NCF-1, 47 kDa autosomal chronic granulomatous disease protein, 47 kDa neutrophil oxidase factor, NCF-47K, Neutrophil NADPH oxidase factor 1, Nox organizer 2, Nox-organizing protein 2, SH3 and PX domain-containing protein 1A, p47 phox, Neutrophil cytosol factor 1
AMOUNT:	100 µl
IMMUNOGEN:	KLH-conjugated synthetic peptide encompassing a sequence within the C-term region of human NCF1
HOST/ISOTYPE:	Rabbit IgG
CLONALITY:	Polyclonal
SPECIFICITY:	Recognizes endogenous levels of NCF1 protein
SPECIES REACTIVITY:	Human, Mouse and Monkey
PURIFICATION:	The antibody was purified by affinity chromatography
FORM:	Liquid
FORMULATION:	Supplied in 0.42% Potassium phosphate; 0.87% Sodium chloride; pH 7.3; 30% glycerol and 0.01% sodium azide
STORAGE CONDITIONS:	Shipped at 4°C. For long term storage store at -20°C in small aliquots to prevent freeze-thaw cycles
DESCRIPTION:	NCF2, NCF1, and a membrane bound cytochrome b558 are required for activation of the latent NADPH oxidase (necessary for superoxide production)
APPLICATION:	WB; 1:500 – 1:2000, IHC; 1:50 – 1:200, IF/IC; 1:50 – 1:100
	Note: This information is only intended as a guide. The optimal dilutions must be determined by the user.



Immunohistochemical analysis of NCF1 staining in human tonsil formalin fixed paraffin embedded tissue section.



Immunofluorescent analysis of NCF1 staining in Jurkat cells



Western blot analysis of NCF1 expression in Jurkat (A); THP1 (B) whole cell lysates

RELATED PRODUCTS:

- GAPDH Antibody (Cat. No. 3777-100)
- Cytochrome c Antibody (Cat. No. 3025-100)
- Cytochrome c Antibody (Clone 7H8.2C12) (Cat. No. 3026-100)
- Cytochrome c Blocking Peptide (Cat. No. 3352BP-50)

FOR RESEARCH USE ONLY! Not to be used on humans.