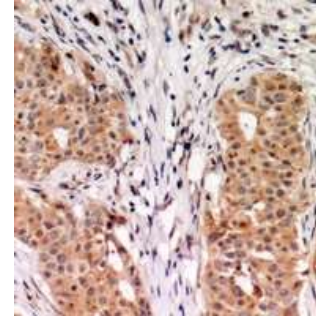
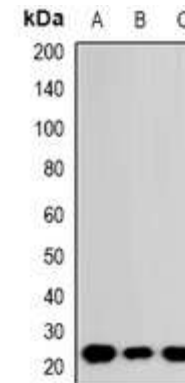


RhoGDI Antibody

CATALOG NO:	A1161-100
ALTERNATIVE NAMES:	GDIA1, Rho GDP-dissociation inhibitor 1, Rho GDI 1, Rho-GDI
AMOUNT:	100 µl
IMMUNOGEN:	KLH-conjugated synthetic peptide encompassing a sequence within the C-term region of human RhoGDI alpha
HOST/ISOTYPE:	Rabbit IgG
CLONALITY:	Polyclonal
SPECIFICITY:	Recognizes endogenous levels of RhoGDI alpha protein
SPECIES REACTIVITY:	Human
PURIFICATION:	The antibody was purified by affinity chromatography
FORM:	Liquid
FORMULATION:	Supplied in 0.42% Potassium phosphate; 0.87% Sodium chloride; pH 7.3; 30% glycerol and 0.01% sodium azide
STORAGE CONDITIONS:	Shipped at 4°C. For long term storage store at -20°C in small aliquots to prevent freeze-thaw cycles
DESCRIPTION:	Controls Rho proteins homeostasis. Regulates the GDP/GTP exchange reaction of the Rho proteins by inhibiting the dissociation of GDP from them, and the subsequent binding of GTP to them. Retains Rho proteins such as CDC42, RAC1 and RHOA in an inactive cytosolic pool, regulating their stability and protecting them from degradation. Actively involved in the recycling and distribution of activated Rho GTPases in the cell, mediates extraction from membranes of both inactive and activated molecules due its exceptionally high affinity for prenylated forms. Through the modulation of Rho proteins, may play a role in cell motility regulation. In glioma cells, inhibits cell migration and invasion by mediating the signals of SEMA5A and PLXNB3 that lead to inactivation of RAC1.
APPLICATION:	WB; 1:500 – 1:2000, IHC; 1:50 – 1:200
	Note: This information is only intended as a guide. The optimal dilutions must be determined by the user.



Immunohistochemical analysis of RhoGDI alpha staining in human breast cancer formalin fixed paraffin embedded tissue section



Western blot analysis of RhoGDI alpha expression in A549 (A); DLD (B); HepG2 (C) whole cell lysates

RELATED PRODUCTS:

- Tubulin Antibody (Cat. No. 3708-100)
- Beta-Actin Antibody (Clone BA3R) (Cat. No. 3598R-100)
- Beta Actin Monoclonal Antibody (Cat. No. A1031-100)
- Anti-ACTA2 Rabbit Monoclonal Antibody (Cat. No. A1118-50)

FOR RESEARCH USE ONLY! Not to be used on humans.