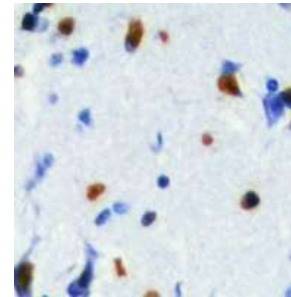


Anti-SRSF5 Antibody

CATALOG NO:	A1165-100
ALTERNATIVE NAMES:	HRS, SFRS5; SRP40, Serine/arginine-rich splicing factor 5, Delayed-early protein HRS, Pre-mRNA-splicing factor SRP40, Splicing factor arginine/serine-rich 5
AMOUNT:	100 µl
IMMUNOGEN:	KLH-conjugated synthetic peptide encompassing a sequence within the center region of human SRSF5
HOST/ISOTYPE:	Rabbit IgG
CLONALITY:	Polyclonal
SPECIFICITY:	Recognizes endogenous levels of SRSF5 protein
SPECIES REACTIVITY:	Human, Mouse and Rat
PURIFICATION:	The antibody was purified by affinity chromatography
FORM:	Liquid
FORMULATION:	Supplied in 0.42% Potassium phosphate; 0.87% Sodium chloride; pH 7.3; 30% glycerol and 0.01% sodium azide
STORAGE CONDITIONS:	Shipped at 4°C. For long term storage store at -20°C in small aliquots to prevent freeze-thaw cycles
DESCRIPTION:	The protein encoded by this gene is a member of the serine/arginine (SR)-rich family of pre-mRNA splicing factors, which constitute part of the spliceosome. Each of these factors contains an RNA recognition motif (RRM) for binding RNA and an RS domain for binding other proteins. The RS domain is rich in serine and arginine residues and facilitates interaction between different SR splicing factors. In addition to being critical for mRNA splicing, the SR proteins have also been shown to be involved in mRNA export from the nucleus and in translation. Two transcript variants encoding the same protein have been found for this gene. Plays a role in constitutive splicing and can modulate the selection of alternative splice sites.
APPLICATION:	WB; 1:500 – 1:2000, IHC; 1:50 – 1:200, IF/IC; 1:50 – 1:100

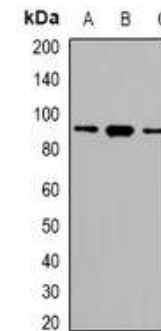
Note: This information is only intended as a guide. The optimal dilutions must be determined by the user.



Immunohistochemical analysis of SRSF5 staining in human brain formalin fixed paraffin embedded tissue section.



Immunofluorescent analysis of SRSF5 staining in HeLa cells



Western blot analysis of SRSF5 expression in HeLa (A); RAW264.7 (B); H9C2 (C) whole cell lysates

RELATED PRODUCTS:

- BMI 1 Antibody (Cat. No. 6150-100)
- EZH1 Polyclonal Antibody (Cat. No. 6123-50)
- EZH2 Antibody (Cat. No. 3242-100)
- EZH2 Blocking Peptide (Cat. No. 3242BP-50)
- 3-Deazaneplanocin (Cat. No. 2060-250, -1000)
- GSK343 (Cat. No. 2281-1, -5)
- GSK126 (Cat. No. 2282-1, -5)

FOR RESEARCH USE ONLY! Not to be used on humans.