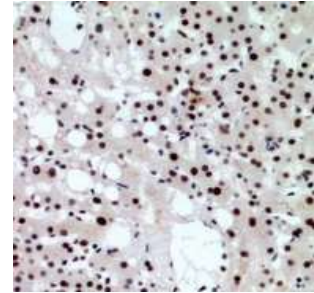


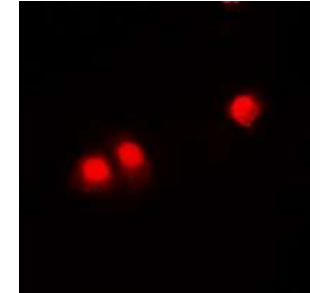
Anti-CHD4 Antibody

CATALOG NO:	A1166-100
ALTERNATIVE NAMES:	Chromodomain-helicase-DNA-binding protein 4, CHD-4, ATP-dependent helicase CHD4, Mi-2 autoantigen 218 kDa protein, Mi2-beta
AMOUNT:	100 µl
IMMUNOGEN:	KLH-conjugated synthetic peptide encompassing a sequence within the center region of human CHD4
HOST/ISOTYPE:	Rabbit IgG
CLONALITY:	Polyclonal
SPECIFICITY:	Recognizes endogenous levels of CHD4 protein
SPECIES REACTIVITY:	Human, Mouse and Rat
PURIFICATION:	The antibody was purified by affinity chromatography
FORM:	Liquid
FORMULATION:	Supplied in 0.42% Potassium phosphate; 0.87% Sodium chloride; pH 7.3; 30% glycerol and 0.01% sodium azide
STORAGE CONDITIONS:	Shipped at 4°C. For long term storage store at -20°C in small aliquots to prevent freeze-thaw cycles
DESCRIPTION:	Component of the histone deacetylase NuRD complex which participates in the remodeling of chromatin by deacetylating histones.
APPLICATION:	WB; 1:500 – 1:2000, IHC; 1:50 – 1:200, IF/IC; 1:50 – 1:100

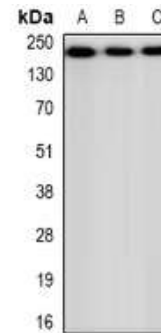
Note: This information is only intended as a guide. The optimal dilutions must be determined by the user.



Immunohistochemical analysis of CHD4 staining in human liver cancer formalin fixed paraffin embedded tissue section.



Immunofluorescent analysis of CHD4 staining in HEK293 cells



Western blot analysis of CHD4 expression in HEK293 (A); NIH3T3 (B); H9C2 (C) whole cell lysates

RELATED PRODUCTS:

- FasL Antibody (Cat. No. 3345R-100)
- SOCS1 Antibody (Cat. No. 3861-100)
- Transglutaminase-2 Antibody (Cat. No. A1001-100)

FOR RESEARCH USE ONLY! Not to be used on humans.