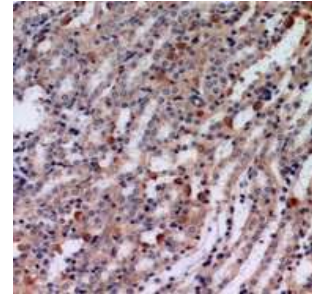


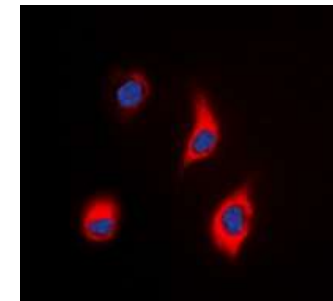
Anti-Tensin 3 Antibody

CATALOG NO:	A1168-100
ALTERNATIVE NAMES:	TEM6; TENS1; TPP; Tensin-3; Tensin-like SH2 domain-containing protein 1; Tumor endothelial marker 6
AMOUNT:	100 µl
IMMUNOGEN:	KLH-conjugated synthetic peptide encompassing a sequence within the center region of human Tensin 3
HOST/ISOTYPE:	Rabbit IgG
CLONALITY:	Polyclonal
SPECIFICITY:	Recognizes endogenous levels of Tensin 3 protein
SPECIES REACTIVITY:	Human and Rat
PURIFICATION:	The antibody was purified by affinity chromatography
FORM:	Liquid
FORMULATION:	Supplied in 0.42% Potassium phosphate; 0.87% Sodium chloride; pH 7.3; 30% glycerol and 0.01% sodium azide
STORAGE CONDITIONS:	Shipped at 4°C. For long term storage store at -20°C in small aliquots to prevent freeze-thaw cycles
DESCRIPTION:	May play a role in actin remodeling. Involved in the dissociation of the integrin-tensin-actin complex. EGF activates TNS4 and down-regulates TNS3 which results in capping the tail of ITGB1. Seems to be involved in mammary cell migration. May be involved in cell migration and bone development.
APPLICATION:	WB; 1:500 – 1:2000, IHC; 1:50 – 1:200, IF/IC; 1:50 – 1:100

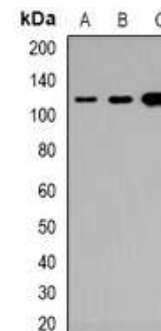
Note: This information is only intended as a guide. The optimal dilutions must be determined by the user.



Immunohistochemical analysis of Tensin 3 staining in human kidney formalin fixed paraffin embedded tissue section.



Immunofluorescent analysis of Tensin 3 staining in HeLa cells



Western blot analysis of Tensin 3 expression in HeLa (A), DLD (B), H9C2 (C) whole cell lysates.

RELATED PRODUCTS:

- FAK Antibody (Cat. No. 3399-100)
- Phospho-Erk1/2 Antibody (Cat. No. 3441-100)
- Beta Actin Monoclonal Antibody (Cat. No. A1031-100)
- Anti-ACTA2 Rabbit Monoclonal Antibody (Cat. No. A1118-50)

FOR RESEARCH USE ONLY! Not to be used on humans.