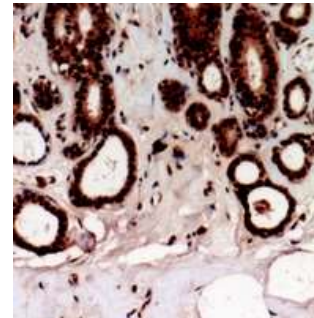


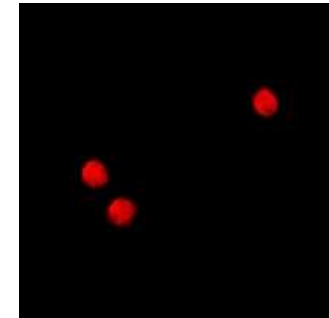
Anti-TSHZ2 Antibody

CATALOG NO:	A1171-100
ALTERNATIVE NAMES:	C20orf17, TSH2, ZNF218, Teashirt homolog 2, Ovarian cancer-related protein 10-2, OVC10-2, Zinc finger protein 218
AMOUNT:	100 µl
IMMUNOGEN:	KLH-conjugated synthetic peptide encompassing a sequence within the C-term region of human TSHZ2
HOST/ISOTYPE:	Rabbit IgG
CLONALITY:	Polyclonal
SPECIFICITY:	Recognizes endogenous levels of TSHZ2 protein
SPECIES REACTIVITY:	Human, Mouse and Rat
PURIFICATION:	The antibody was purified by affinity chromatography
FORM:	Liquid
FORMULATION:	Supplied in 0.42% Potassium phosphate; 0.87% Sodium chloride; pH 7.3; 30% glycerol and 0.01% sodium azide
STORAGE CONDITIONS:	Shipped at 4°C. For long term storage store at -20°C in small aliquots to prevent freeze-thaw cycles
DESCRIPTION:	Teashirt homolog 2 protein is probable transcriptional regulator involved in developmental processes. It may act as a transcriptional repressor
APPLICATION:	WB; 1:500 – 1:2000, IHC; 1:50 – 1:200, IF/IC; 1:50 – 1:100

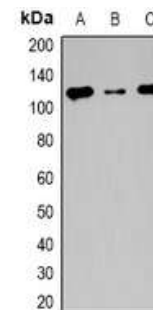
Note: This information is only intended as a guide. The optimal dilutions must be determined by the user.



Immunohistochemical analysis of TSHZ2 staining in human prostate cancer formalin fixed paraffin embedded tissue section.



Immunofluorescent analysis of TSHZ2 staining in HeLa cells



Western blot analysis of TSHZ2 expression in HeLa (A); mouse heart (B); rat heart (C) whole cell lysates

RELATED PRODUCTS:

- Sox-2 Antibody (Cat. No. 3889-100)
- Sox-2 Antibody (Clone # 57CT23.3.4) (Cat. No. 6772-100)
- Oct-4 Antibody (Cat. No. 3576-30T, -100)
- Anti-Ki67 Rabbit Monoclonal Antibody (Cat. No. A1135-100)

FOR RESEARCH USE ONLY! Not to be used on humans.