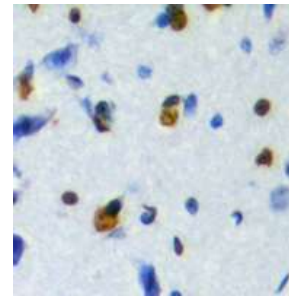


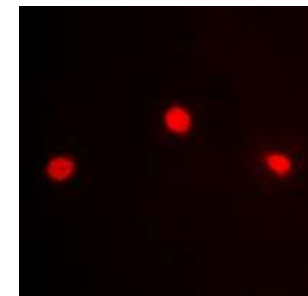
Anti-ZKSCAN5 Antibody

CATALOG NO:	A1173-100
ALTERNATIVE NAMES:	KIAA1015; ZFP95; Zinc finger protein with KRAB and SCAN domains 5; Zinc finger protein 95 homolog; Zfp-95
AMOUNT:	100 µl
IMMUNOGEN:	KLH-conjugated synthetic peptide encompassing a sequence within the center region of human ZKSCAN5
HOST/ISOTYPE:	Rabbit IgG
CLONALITY:	Polyclonal
SPECIFICITY:	Recognizes endogenous levels of ZKSCAN5 protein
SPECIES REACTIVITY:	Human, Mouse and Rat
PURIFICATION:	The antibody was purified by affinity chromatography
FORM:	Liquid
FORMULATION:	Supplied in 0.42% Potassium phosphate; 0.87% Sodium chloride; pH 7.3; 30% glycerol and 0.01% sodium azide
STORAGE CONDITIONS:	Shipped at 4°C. For long term storage store at -20°C in small aliquots to prevent freeze-thaw cycles
DESCRIPTION:	This gene encodes a zinc finger protein of the Kruppel family. The protein contains a SCAN box and a KRAB A domain. Sequence analysis indicates that ZFP95 contains 12 highly conserved zinc finger motifs at the C-terminus and a SCAN box as well as a KRAB A domain at the N-terminus of the protein.
APPLICATION:	WB; 1:500 – 1:2000, IHC; 1:50 – 1:200, IF/IC; 1:50 – 1:100

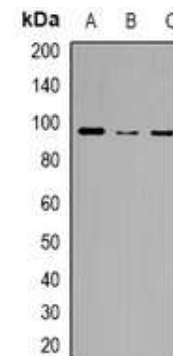
Note: This information is only intended as a guide. The optimal dilutions must be determined by the user.



Immunohistochemical analysis of ZKSCAN5 staining in human brain formalin fixed paraffin embedded tissue section.



Immunofluorescent analysis of ZKSCAN5 staining in HeLa cells



Western blot analysis of ZKSCAN5 expression in HeLa (A); RAW264.7 (B); H9C2 (C) whole cell lysates.

RELATED PRODUCTS:

- PPAR gamma Antibody (Cat. No. 3809-100)
- DNMT1 Antibody (Cat. No. 3946-100)
- KLF4 Antibody (4G6E11) (Cat. No. 5300-100)
- NIF1 Antibody (Cat. No. 3737-100)

FOR RESEARCH USE ONLY! Not to be used on humans.