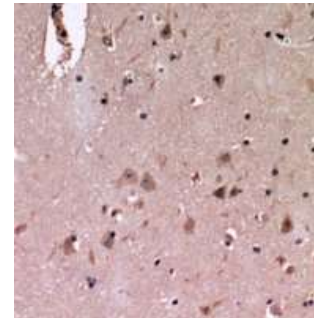


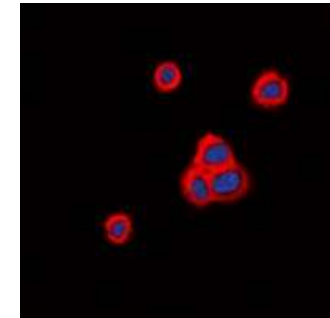
Anti-Cadherin 20 Antibody

CATALOG NO:	A1174-100
ALTERNATIVE NAMES:	CDH7L3, Cadherin-20
AMOUNT:	100 µl
IMMUNOGEN:	KLH-conjugated synthetic peptide encompassing a sequence within the center region of human Cadherin 20
HOST/ISOTYPE:	Rabbit IgG
CLONALITY:	Polyclonal
SPECIFICITY:	Recognizes endogenous levels of Cadherin 20 protein
SPECIES REACTIVITY:	Human, Mouse and Rat
PURIFICATION:	The antibody was purified by affinity chromatography
FORM:	Liquid
FORMULATION:	Supplied in 0.42% Potassium phosphate; 0.87% Sodium chloride; pH 7.3; 30% glycerol and 0.01% sodium azide
STORAGE CONDITIONS:	Shipped at 4°C. For long term storage store at -20°C in small aliquots to prevent freeze-thaw cycles
DESCRIPTION:	Cadherins are calcium-dependent cell adhesion proteins. They preferentially interact with themselves in a homophilic manner in connecting cells; cadherins may thus contribute to the sorting of heterogeneous cell types.
APPLICATION:	WB; 1:500 – 1:2000, IHC; 1:50 – 1:200, IF/IC; 1:50 – 1:100

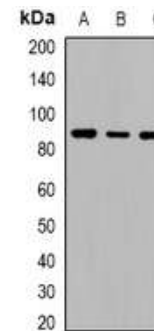
Note: This information is only intended as a guide. The optimal dilutions must be determined by the user.



Immunohistochemical analysis of Cadherin 20 staining in human brain formalin fixed paraffin embedded tissue section.



Immunofluorescent analysis of Cadherin 20 staining in HeLa cells



Western blot analysis of Cadherin 20 expression in HeLa (A); mouse liver (B); rat liver (C) whole cell lysates

RELATED PRODUCTS:

- Human CellExp™ E-Cadherin /ECAD /Cadherin-1/CD324 Protein, human recombinant (Cat. No. 7420-25)
- E-Cadherin (Human) ELISA Kit (Cat. No. K4189-100)
- Cadherin Antibody (Cat. No. 3365R-100)
- Cadherin Blocking Peptide (Cat. No. 3365RBP-50)

FOR RESEARCH USE ONLY! Not to be used on humans.