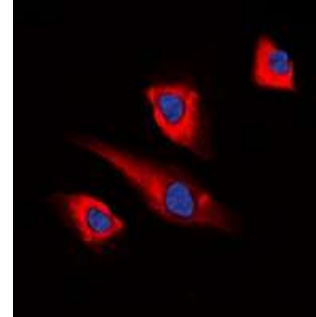
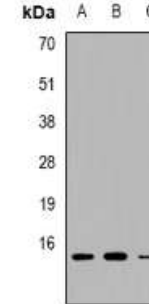


Anti-PEA15 Antibody

CATALOG NO:	A1175-100
ALTERNATIVE NAMES:	Astrocytic phosphoprotein PEA-15, 15 kDa phosphoprotein enriched in astrocytes, Phosphoprotein enriched in diabetes, PED
AMOUNT:	100 µl
IMMUNOGEN:	KLH-conjugated synthetic peptide encompassing a sequence within the center region of human PEA15
HOST/ISOTYPE:	Rabbit IgG
CLONALITY:	Polyclonal
SPECIFICITY:	Recognizes endogenous levels of PEA15 protein
SPECIES REACTIVITY:	Human, Mouse and Rat
PURIFICATION:	The antibody was purified by affinity chromatography
FORM:	Liquid
FORMULATION:	Supplied in 0.42% Potassium phosphate; 0.87% Sodium chloride; pH 7.3; 30% glycerol and 0.01% sodium azide
STORAGE CONDITIONS:	Shipped at 4°C. For long term storage store at -20°C in small aliquots to prevent freeze-thaw cycles
DESCRIPTION:	Blocks Ras-mediated inhibition of integrin activation and modulates the ERK MAP kinase cascade. Inhibits RPS6KA3 activities by retaining it in the cytoplasm. Inhibits both TNFRSF6- and TNFRSF1A-mediated CASP8 activity and apoptosis. Regulates glucose transport by controlling both the content of SLC2A1 glucose transporters on the plasma membrane and the insulin-dependent trafficking of SLC2A4 from the cell interior to the surface.
APPLICATION:	WB; 1:500 – 1:2000, 1:50 – 1:100
	Note: This information is only intended as a guide. The optimal dilutions must be determined by the user.



Immunofluorescent analysis of PEA15 staining in HEK293T cells



Western blot analysis of PEA15 expression in HEK293T (A); RAW264.7 (B); H9C2 (C) whole cell lysates

RELATED PRODUCTS:

- Bax Antibody (Cat. No. 3032-100)
- Transglutaminase-2 Antibody (Cat. No. A1001-100)
- Bim/Bod Antibody (Cat. No. 3124-100)
- APG7/ATG7 Antibody (Cat. No. 3907-100)

FOR RESEARCH USE ONLY! Not to be used on humans.