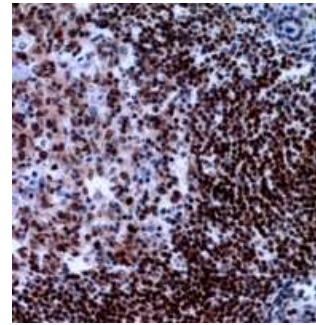


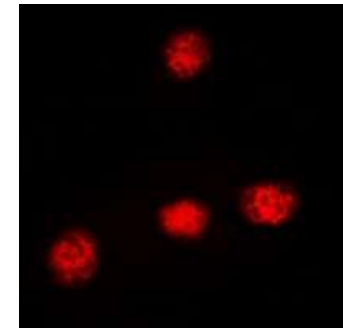
Anti-XRCC3 Antibody

CATALOG NO:	A1176-100
ALTERNATIVE NAMES:	DNA repair protein XRCC3; X-ray repair cross-complementing protein 3
AMOUNT:	100 µl
IMMUNOGEN:	KLH-conjugated synthetic peptide encompassing a sequence within the center region of human XRCC3
HOST/ISOTYPE:	Rabbit IgG
CLONALITY:	Polyclonal
SPECIFICITY:	Recognizes endogenous levels of XRCC3 protein
SPECIES REACTIVITY:	Human, Mouse and Rat
PURIFICATION:	The antibody was purified by affinity chromatography
FORM:	Liquid
FORMULATION:	Supplied in 0.42% Potassium phosphate; 0.87% Sodium chloride; pH 7.3; 30% glycerol and 0.01% sodium azide
STORAGE CONDITIONS:	Shipped at 4°C. For long term storage store at -20°C in small aliquots to prevent freeze-thaw cycles
DESCRIPTION:	Involved in the homologous recombination repair (HRR) pathway of double-stranded DNA, thought to repair chromosomal fragmentation, translocations and deletions. Part of the RAD21 paralog protein complex CX3 which acts in the BRCA1-BRCA2-dependent HR pathway. Upon DNA damage, CX3 acts downstream of RAD51 recruitment; the complex binds predominantly to the intersection of the four duplex arms of the Holliday junction (HJ) and to junctions of replication forks. Involved in HJ resolution and thus in processing HR intermediates late in the DNA repair process; the function may be linked to the CX3 complex and seems to involve GEN1 during mitotic cell cycle progression. Part of a PALB2-scaffolded HR complex containing BRCA2 and RAD51C and which is thought to play a role in DNA repair by HR. Plays a role in regulating mitochondrial DNA copy number under conditions of oxidative stress in the presence of RAD51 and RAD51C.
APPLICATION:	WB; 1:500 – 1:2000, IHC; 1:50 – 1:200, IF/IC; 1:50 – 1:100

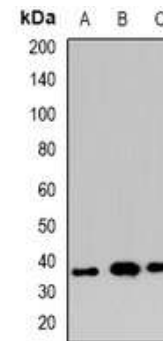
Note: This information is only intended as a guide. The optimal dilutions must be determined by the user.



Immunohistochemical analysis of XRCC3 staining in human tonsil formalin fixed paraffin embedded tissue section.



Immunofluorescent analysis of XRCC3 staining in HeLa cells



Western blot analysis of XRCC3 expression in HeLa (A); mouse kidney (B); rat kidney (C) whole cell lysates

RELATED PRODUCTS:

- Sox-2 Antibody (Cat. No. 3889-100)
- Sox-2 Antibody (Clone # 57CT23.3.4) (Cat. No. 6772-100)
- Oct-4 Antibody (Cat. No. 3576-30T, -100)
- Anti-Ki67 Rabbit Monoclonal Antibody (Cat. No. A1135-100)

FOR RESEARCH USE ONLY! Not to be used on humans.