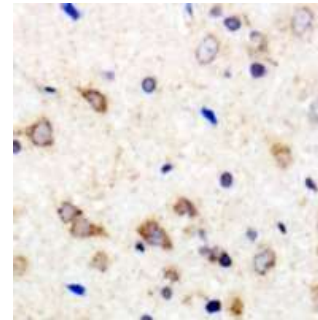


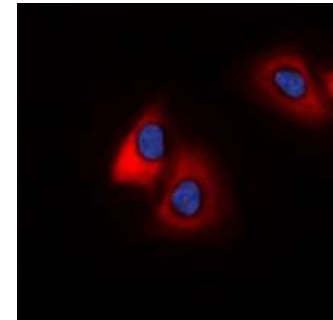
## Anti-MARCH2 Antibody

<b>CATALOG NO:</b>	A1178-100
<b>ALTERNATIVE NAMES:</b>	RNF172, E3 ubiquitin-protein ligase MARCH2, Membrane-associated RING finger protein 2, Membrane-associated RING-CH protein II, MARCH-II, RING finger protein 172
<b>AMOUNT:</b>	100 µl
<b>IMMUNOGEN:</b>	KLH-conjugated synthetic peptide encompassing a sequence within the center region of human MARCH2
<b>HOST/ISOTYPE:</b>	Rabbit IgG
<b>CLONALITY:</b>	Polyclonal
<b>SPECIFICITY:</b>	Recognizes endogenous levels of MARCH2 protein
<b>SPECIES REACTIVITY:</b>	Human and Rat
<b>PURIFICATION:</b>	The antibody was purified by affinity chromatography
<b>FORM:</b>	Liquid
<b>FORMULATION:</b>	Supplied in 0.42% Potassium phosphate; 0.87% Sodium chloride; pH 7.3; 30% glycerol and 0.01% sodium azide
<b>STORAGE CONDITIONS:</b>	Shipped at 4°C. For long term storage store at -20°C in small aliquots to prevent freeze-thaw cycles
<b>DESCRIPTION:</b>	E3 ubiquitin-protein ligase that may mediate ubiquitination of TFRC and CD86, and promote their subsequent endocytosis and sorting to lysosomes via multivesicular bodies. E3 ubiquitin ligases accept ubiquitin from an E2 ubiquitin-conjugating enzyme in the form of a thioester and then directly transfer the ubiquitin to targeted substrates. May be involved in endosomal trafficking through interaction with STX6
<b>APPLICATION:</b>	WB; 1:500 – 1:2000, IHC; 1:50 – 1:200, IF/IC; 1:50 – 1:100

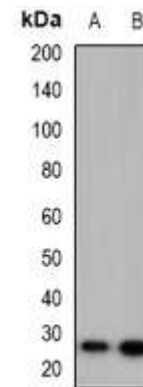
**Note:** This information is only intended as a guide. The optimal dilutions must be determined by the user.



Immunohistochemical analysis of MARCH2 staining in human brain formalin fixed paraffin embedded tissue section.



Immunofluorescent analysis of MARCH2 staining in HeLa cells



Western blot analysis of MARCH2 expression in HeLa (A); PC12 (B) whole cell lysates

### RELATED PRODUCTS:

- BRCA1 Antibody (Cat. No. 3364-100)
- KAP-1 Antibody (Cat. No. 3764-100)
- TIF1a/TRIM24 Antibody (Cat. No. 3774-100)
- TRIM71 Antibody (Cat. No. 3774-100)
- USP7 Antibody (Cat. No. 3747-100)

**FOR RESEARCH USE ONLY! Not to be used on humans.**