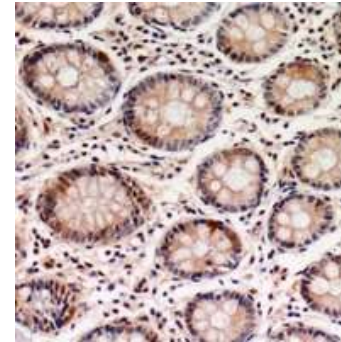


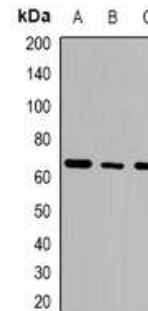
## Anti-GTPBP2 Antibody

<b>CATALOG NO:</b>	A1180-100
<b>ALTERNATIVE NAMES:</b>	GTP-binding protein 2
<b>AMOUNT:</b>	100 µl
<b>IMMUNOGEN:</b>	KLH-conjugated synthetic peptide encompassing a sequence within the center region of human GTPBP2
<b>HOST/ISOTYPE:</b>	Rabbit IgG
<b>CLONALITY:</b>	Polyclonal
<b>SPECIFICITY:</b>	Recognizes endogenous levels of GTPBP2 protein
<b>SPECIES REACTIVITY:</b>	Human, Mouse
<b>PURIFICATION:</b>	The antibody was purified by affinity chromatography
<b>FORM:</b>	Liquid
<b>FORMULATION:</b>	Supplied in 0.42% Potassium phosphate; 0.87% Sodium chloride; pH 7.3; 30% glycerol and 0.01% sodium azide
<b>STORAGE CONDITIONS:</b>	Shipped at 4°C. For long term storage store at -20°C in small aliquots to prevent freeze-thaw cycles
<b>DESCRIPTION:</b>	GTP-binding proteins, or G proteins, constitute a superfamily capable of binding GTP or GDP. G proteins are activated by binding GTP and are inactivated by hydrolyzing GTP to GDP. This general mechanism enables G proteins to perform a wide range of biologic activities.
<b>APPLICATION:</b>	WB; 1:500 – 1:2000, IHC; 1:50 – 1:200

**Note:** This information is only intended as a guide. The optimal dilutions must be determined by the user.



Immunohistochemical analysis of GTPBP2 staining in human colon cancer formalin fixed paraffin embedded tissue section



Western blot analysis of GTPBP2 expression in THP1 (A); K562 (B); Jurkat (C) whole cell lysates

### RELATED PRODUCTS:

- CREB Antibody (Cat. No. 3360R-100)
- AMPK $\gamma$  Antibody (Cat. No. 3109-100)
- PDE3B Antibody (Cat. No. 3956-100)
- cAMP Antibody (Cat. No. 3567-100)

**FOR RESEARCH USE ONLY! Not to be used on humans.**