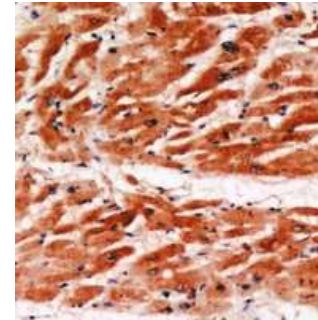


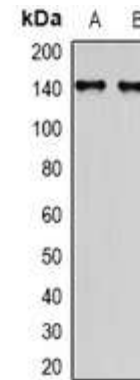
## Anti-MYBPC3 Antibody

<b>CATALOG NO:</b>	A1182-100
<b>ALTERNATIVE NAMES:</b>	Myosin-binding protein C cardiac-type, Cardiac MyBP-C, C-protein cardiac muscle isoform
<b>AMOUNT:</b>	100 µl
<b>IMMUNOGEN:</b>	KLH-conjugated synthetic peptide encompassing a sequence within the center region of human MYBPC3
<b>HOST/ISOTYPE:</b>	Rabbit IgG
<b>CLONALITY:</b>	Polyclonal
<b>SPECIFICITY:</b>	Recognizes endogenous levels of MYBPC3 protein
<b>SPECIES REACTIVITY:</b>	Human, Mouse and Rat
<b>PURIFICATION:</b>	The antibody was purified by affinity chromatography
<b>FORM:</b>	Liquid
<b>FORMULATION:</b>	Supplied in 0.42% Potassium phosphate; 0.87% Sodium chloride; pH 7.3; 30% glycerol and 0.01% sodium azide
<b>STORAGE CONDITIONS:</b>	Shipped at 4°C. For long term storage store at -20°C in small aliquots to prevent freeze-thaw cycles
<b>DESCRIPTION:</b>	Thick filament-associated protein located in the crossbridge region of vertebrate striated muscle bands. In vitro it binds MHC, F-actin and native thin filaments, and modifies the activity of actin-activated myosin ATPase. It may modulate muscle contraction or may play a more structural role.
<b>APPLICATION:</b>	WB; 1:500 – 1:2000, IHC; 1:50 – 1:200

**Note: This information is only intended as a guide. The optimal dilutions must be determined by the user.**



Immunohistochemical analysis of MYBPC3 staining in human heart formalin fixed paraffin embedded tissue section.



Western blot analysis of MYBPC3 expression in mouse heart (A); rat heart (B) whole cell lysates.

### RELATED PRODUCTS:

- HDAC1 Antibody (Cat. No. 3601-100)
- HDAC2 Antibody (Cat. No. 3602-100)
- PKC Antibody (Cat. No. 3450-100)
- Caveolin-1 Antibody (Cat. No. A1010-50)

**FOR RESEARCH USE ONLY! Not to be used on humans.**