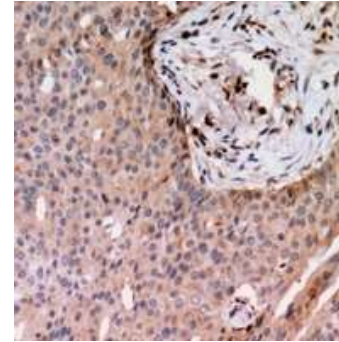


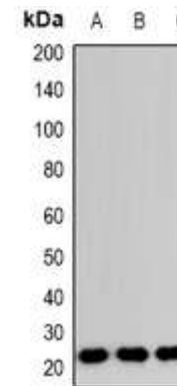
Anti-RAB24 Antibody

CATALOG NO:	A1184-100
ALTERNATIVE NAMES:	Ras-related protein Rab-24
AMOUNT:	100 µl
IMMUNOGEN:	KLH-conjugated synthetic peptide encompassing a sequence within the center region of human RAB24
HOST/ISOTYPE:	Rabbit IgG
CLONALITY:	Polyclonal
SPECIFICITY:	Recognizes endogenous levels of RAB24 protein
SPECIES REACTIVITY:	Human, Mouse and Rat
PURIFICATION:	The antibody was purified by affinity chromatography
FORM:	Liquid
FORMULATION:	Supplied in 0.42% Potassium phosphate; 0.87% Sodium chloride; pH 7.3; 30% glycerol and 0.01% sodium azide
STORAGE CONDITIONS:	Shipped at 4°C. For long term storage store at -20°C in small aliquots to prevent freeze-thaw cycles
DESCRIPTION:	RAB24 is a small GTPase of the Rab subfamily of Ras-related proteins that regulate intracellular protein trafficking. May be involved in autophagy-related processes
APPLICATION:	WB; 1:500 – 1:2000, IHC; 1:50 – 1:200

Note: This information is only intended as a guide. The optimal dilutions must be determined by the user.



Immunohistochemical analysis of RAB24 staining in human breast cancer formalin fixed paraffin embedded tissue section.



Western blot analysis of RAB24 expression in HeLa (A); RAW264.7 (B); H9C2 (C) whole cell lysates.

RELATED PRODUCTS:

- LC3B (Cleaved) Antibody (Cat. No. 6949-100)
- LC3 (APG8B) (NT) Antibody (Cat. No.6-100)
- APG7/ATG7 Antibody (Cat. No. 3907-100)

FOR RESEARCH USE ONLY! Not to be used on humans.