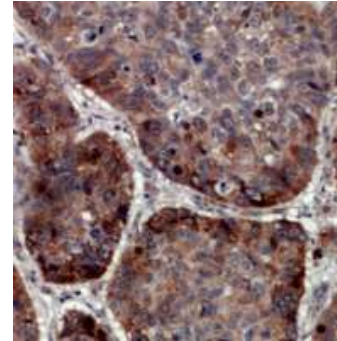


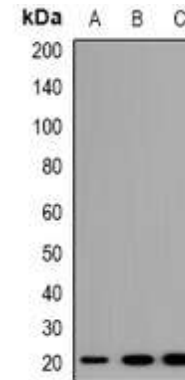
Anti-TRAPPC5 Antibody

CATALOG NO:	A1187-100
ALTERNATIVE NAMES:	Trafficking protein particle complex subunit 5
AMOUNT:	100 µl
IMMUNOGEN:	KLH-conjugated synthetic peptide encompassing a sequence within the center region of human TRAPPC5
HOST/ISOTYPE:	Rabbit IgG
CLONALITY:	Polyclonal
SPECIFICITY:	Recognizes endogenous levels of TRAPPC5 protein
SPECIES REACTIVITY:	Human, Mouse and Rat
PURIFICATION:	The antibody was purified by affinity chromatography
FORM:	Liquid
FORMULATION:	Supplied in 0.42% Potassium phosphate; 0.87% Sodium chloride; pH 7.3; 30% glycerol and 0.01% sodium azide
STORAGE CONDITIONS:	Shipped at 4°C. For long term storage store at -20°C in small aliquots to prevent freeze-thaw cycles
DESCRIPTION:	Trafficking protein particle complex subunit 5 play a role in vesicular transport from endoplasmic reticulum to Golgi.
APPLICATION:	WB; 1:500 – 1:2000, IHC; 1:50 – 1:200

Note: This information is only intended as a guide. The optimal dilutions must be determined by the user.



Immunohistochemical analysis of TRAPPC5 staining in human lung cancer formalin fixed paraffin embedded tissue section.



Western blot analysis of TRAPPC5 expression in A549 (A); NIH3T3 (B); H9C2 (C) whole cell lysates

RELATED PRODUCTS:

- Rab5 Antibody (Cat. No. 3483-100)
- Anti-human Rab5 antibody (Cat. No. A1151-50)
- cdc42/Rac Antibody (Cat. No. 3080-100)
- TSC2 Antibody (Cat. No. 3962-100)

FOR RESEARCH USE ONLY! Not to be used on humans.