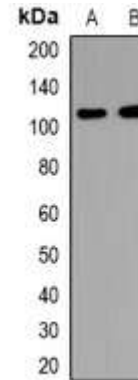


## Anti-USP37 Antibody

<b>CATALOG NO:</b>	A1189-100
<b>ALTERNATIVE NAMES:</b>	KIAA1594, Ubiquitin carboxyl-terminal hydrolase 37, Deubiquitinating enzyme 37, Ubiquitin thioesterase 37, Ubiquitin-specific-processing protease 37
<b>AMOUNT:</b>	100 µl
<b>IMMUNOGEN:</b>	KLH-conjugated synthetic peptide encompassing a sequence within the center region of human USP37
<b>HOST/ISOTYPE:</b>	Rabbit IgG
<b>CLONALITY:</b>	Polyclonal
<b>SPECIFICITY:</b>	Recognizes endogenous levels of USP37 protein
<b>SPECIES REACTIVITY:</b>	Human, Mouse and Rat
<b>PURIFICATION:</b>	The antibody was purified by affinity chromatography
<b>FORM:</b>	Liquid
<b>FORMULATION:</b>	Supplied in 0.42% Potassium phosphate; 0.87% Sodium chloride; pH 7.3; 30% glycerol and 0.01% sodium azide
<b>STORAGE CONDITIONS:</b>	Shipped at 4°C. For long term storage store at -20°C in small aliquots to prevent freeze-thaw cycles
<b>DESCRIPTION:</b>	Deubiquitinase that antagonizes the anaphase-promoting complex (APC/C) during G1/S transition by mediating deubiquitination of cyclin-A (CCNA1 and CCNA2), thereby promoting S phase entry. Specifically mediates deubiquitination of 'Lys-11'-linked polyubiquitin chains, a specific ubiquitin-linkage type mediated by the APC/C complex. Also mediates deubiquitination of 'Lys-48'-linked polyubiquitin chains in vitro. Phosphorylation at Ser-628 during G1/S phase maximizes the deubiquitinase activity, leading to prevent degradation of cyclin-A (CCNA1 and CCNA2).
<b>APPLICATION:</b>	WB; 1:500 – 1:2000

**Note:** This information is only intended as a guide. The optimal dilutions must be determined by the user.



Western blot analysis of USP37 expression in HeLa (A); mouse brain (B) whole cell lysates

### RELATED PRODUCTS:

- USP1 Polyclonal Antibody (Cat. No. 6140-100)
- USP2 Polyclonal Antibody (Cat. No. 6141-100)
- USP3 Polyclonal Antibody (Cat. No. 6142-100)
- USP4 Polyclonal Antibody (Cat. No. 6131-50)
- USP5 Polyclonal Antibody (Cat. No. 6132-50)
- USP7 Polyclonal Antibody (Cat. No. 3747-100)
- USP8 Polyclonal Antibody (Cat. No. 6133-50)
- USP14 Polyclonal Antibody (Cat. No. 6134-50)
- USP15 Polyclonal Antibody (Cat. No. 6135-50)
- USP25 Polyclonal Antibody (Cat. No. 6143-50)

**FOR RESEARCH USE ONLY! Not to be used on humans.**