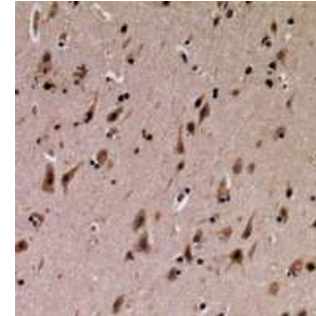


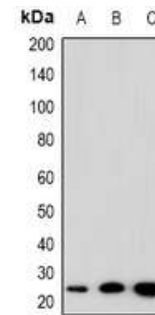
Anti-SFT2D3 Antibody

CATALOG NO:	A1192-100
ALTERNATIVE NAMES:	Vesicle transport protein SFT2C, SFT2 domain-containing protein 3
AMOUNT:	100 µl
IMMUNOGEN:	KLH-conjugated synthetic peptide encompassing a sequence within the center region of human SFT2D3
HOST/ISOTYPE:	Rabbit IgG
CLONALITY:	Polyclonal
SPECIFICITY:	Recognizes endogenous levels of SFT2D3 protein
SPECIES REACTIVITY:	Human, Mouse and Rat
PURIFICATION:	The antibody was purified by affinity chromatography
FORM:	Liquid
FORMULATION:	Supplied in 0.42% Potassium phosphate; 0.87% Sodium chloride; pH 7.3; 30% glycerol and 0.01% sodium azide
STORAGE CONDITIONS:	Shipped at 4°C. For long term storage store at -20°C in small aliquots to prevent freeze-thaw cycles
DESCRIPTION:	Vesicle transport protein SFT2C is involved in fusion of retrograde transport vesicles derived from an endocytic compartment with the Golgi complex.
APPLICATION:	WB; 1:500 – 1:2000, IHC; 1:50 – 1:200

Note: This information is only intended as a guide. The optimal dilutions must be determined by the user.



Immunohistochemical analysis of SFT2D3 staining in human brain formalin fixed paraffin embedded tissue section.



Western blot analysis of SFT2D3 expression in HepG2 (A); NIH3T3 (B); PC12 (C) whole cell lysates

RELATED PRODUCTS:

- PPAR gamma Antibody (Cat. No. 3809-100)
- DNMT1 Antibody (Cat. No. 3946-100)
- KLF4 Antibody (4G6E11) (Cat. No. 5300-100)
- NIF1 Antibody (Cat. No. 3737-100)

FOR RESEARCH USE ONLY! Not to be used on humans.