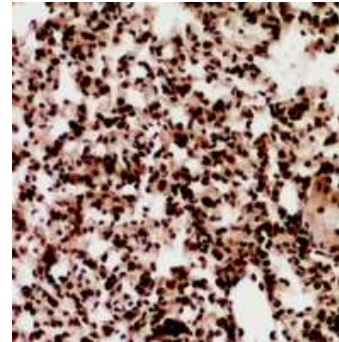


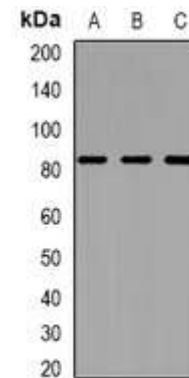
## Anti-ZNF600 Antibody

<b>CATALOG NO:</b>	A1194-100
<b>ALTERNATIVE NAMES:</b>	Zinc finger protein 600
<b>AMOUNT:</b>	100 µl
<b>IMMUNOGEN:</b>	KLH-conjugated synthetic peptide encompassing a sequence within the center region of human ZNF600
<b>HOST/ISOTYPE:</b>	Rabbit IgG
<b>CLONALITY:</b>	Polyclonal
<b>SPECIFICITY:</b>	Recognizes endogenous levels of ZNF600 protein
<b>SPECIES REACTIVITY:</b>	Human, Mouse and Rat
<b>PURIFICATION:</b>	The antibody was purified by affinity chromatography
<b>FORM:</b>	Liquid
<b>FORMULATION:</b>	Supplied in 0.42% Potassium phosphate; 0.87% Sodium chloride; pH 7.3; 30% glycerol and 0.01% sodium azide
<b>STORAGE CONDITIONS:</b>	Shipped at 4°C. For long term storage store at -20°C in small aliquots to prevent freeze-thaw cycles
<b>DESCRIPTION:</b>	Zinc-finger protein X-linked (ZFX) is a transcription factor required for self-renewal of embryonic stem cells. It has been implicated in the initiation and progression of various human malignancies.
<b>APPLICATION:</b>	WB; 1:500 – 1:2000, IHC; 1:50 – 1:200

**Note:** This information is only intended as a guide. The optimal dilutions must be determined by the user.



Immunohistochemical analysis of ZNF600 staining in human lung cancer formalin fixed paraffin embedded tissue section.



Western blot analysis of ZNF600 expression in MCF7 (A); RAW264.7 (B); H9C2 (C) whole cell lysates

### RELATED PRODUCTS:

- PPAR gamma Antibody (Cat. No. 3809-100)
- DNMT1 Antibody (Cat. No. 3946-100)
- KLF4 Antibody (4G6E11) (Cat. No. 5300-100)
- NIF1 Antibody (Cat. No. 3737-100)

**FOR RESEARCH USE ONLY! Not to be used on humans.**