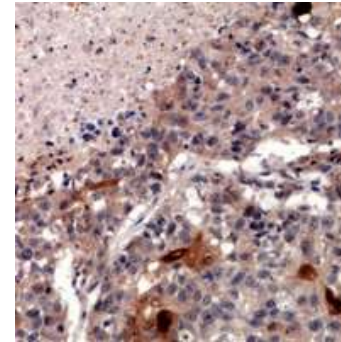


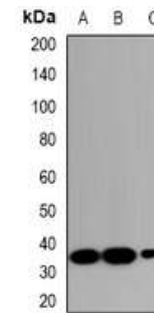
Anti-ZNT2 Antibody

CATALOG NO:	A1195-100
ALTERNATIVE NAMES:	ZNT2, Zinc transporter 2, ZnT-2, Solute carrier family 30 member 2
AMOUNT:	100 µl
IMMUNOGEN:	KLH-conjugated synthetic peptide encompassing a sequence within the center region of human ZNT2
HOST/ISOTYPE:	Rabbit IgG
CLONALITY:	Polyclonal
SPECIFICITY:	Recognizes endogenous levels of ZNT2 protein
SPECIES REACTIVITY:	Human, Mouse and Rat
PURIFICATION:	The antibody was purified by affinity chromatography
FORM:	Liquid
FORMULATION:	Supplied in 0.42% Potassium phosphate; 0.87% Sodium chloride; pH 7.3; 30% glycerol and 0.01% sodium azide
STORAGE CONDITIONS:	Shipped at 4°C. For long term storage store at -20°C in small aliquots to prevent freeze-thaw cycles
DESCRIPTION:	The zinc (Zn) transporter ZNT2 (SLC30A2) is expressed in specialized secretory cells including breast, pancreas and prostate, and imports Zn into mitochondria and vesicles.
APPLICATION:	WB; 1:500 – 1:2000, IHC; 1:50 – 1:200

Note: This information is only intended as a guide. The optimal dilutions must be determined by the user.



Immunohistochemical analysis of ZNT2 staining in human lung cancer formalin fixed paraffin embedded tissue section.



Western blot analysis of ZNT2 expression in HeLa (A); RAW264.7 (B); PC12 (C) whole cell lysates.

RELATED PRODUCTS:

- PPAR gamma Antibody (Cat. No. 3809-100)
- DNMT1 Antibody (Cat. No. 3946-100)
- KLF4 Antibody (4G6E11) (Cat. No. 5300-100)
- NIF1 Antibody (Cat. No. 3737-100)
- Anti-ZNF600 Antibody (Cat. No. A1194-100)

FOR RESEARCH USE ONLY! Not to be used on humans.