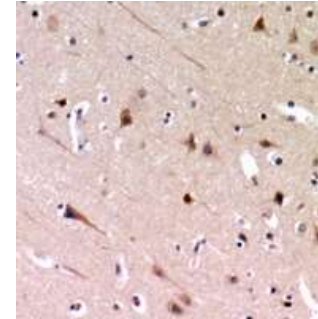


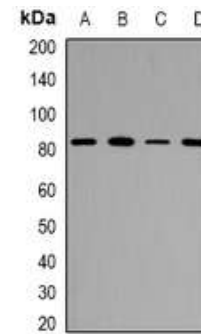
Anti-ZP2 Antibody

CATALOG NO:	A1196-100
ALTERNATIVE NAMES:	ZPA, Zona pellucida sperm-binding protein 2, Zona pellucida glycoprotein 2, Zp-2, Zona pellucida protein A
AMOUNT:	100 µl
IMMUNOGEN:	KLH-conjugated synthetic peptide encompassing a sequence within the center region of human ZP2
HOST/ISOTYPE:	Rabbit IgG
CLONALITY:	Polyclonal
SPECIFICITY:	Recognizes endogenous levels of ZP2 protein
SPECIES REACTIVITY:	Human, Mouse and Rat
PURIFICATION:	The antibody was purified by affinity chromatography
FORM:	Liquid
FORMULATION:	Supplied in 0.42% Potassium phosphate; 0.87% Sodium chloride; pH 7.3; 30% glycerol and 0.01% sodium azide
STORAGE CONDITIONS:	Shipped at 4°C. For long term storage store at -20°C in small aliquots to prevent freeze-thaw cycles
DESCRIPTION:	The mammalian zona pellucida, which mediates species-specific sperm binding, induction of the acrosome reaction and prevents post-fertilization polyspermy, is composed of three to four glycoproteins, ZP1, ZP2, ZP3, and ZP4. ZP2 may act as a secondary sperm receptor.
APPLICATION:	WB; 1:500 – 1:2000, IHC; 1:50 – 1:200

Note: This information is only intended as a guide. The optimal dilutions must be determined by the user.



Immunohistochemical analysis of ZP2 staining in human brain formalin fixed paraffin embedded tissue section.



Western blot analysis of ZP2 expression in MCF7 (A), HeLa (B), RAW264.7 (C), H9C2 (D) whole cell lysates.

RELATED PRODUCTS:

- CD9 Antibody (Cat. No. 6938-50)
- Sox-2 Antibody (Cat. No. 3889-100)
- Vimentin Antibody (Cat. No. 3634-100)
- Oct-4 Antibody (Cat. No. 3576-30T-100)

FOR RESEARCH USE ONLY! Not to be used on humans.