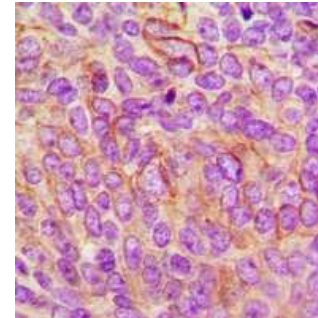


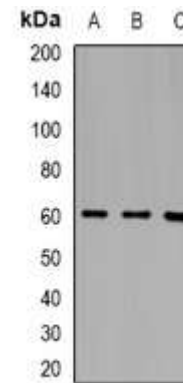
Anti-LILRB5 Antibody

CATALOG NO:	A1204-100
ALTERNATIVE NAMES:	LIR8; Leukocyte immunoglobulin-like receptor subfamily B member 5; CD85 antigen-like family member C; Leukocyte immunoglobulin-like receptor 8; LIR-8; CD85c
AMOUNT:	100 µl
IMMUNOGEN:	KLH-conjugated synthetic peptide encompassing a sequence within the center region of human LILRB5
HOST/ISOTYPE:	Rabbit IgG
CLONALITY:	Polyclonal
SPECIFICITY:	Recognizes endogenous levels of LILRB5 protein
SPECIES REACTIVITY:	Human, Mouse and Rat
PURIFICATION:	The antibody was purified by affinity chromatography
FORM:	Liquid
FORMULATION:	Supplied in 0.42% Potassium phosphate; 0.87% Sodium chloride; pH 7.3; 30% glycerol and 0.01% sodium azide
STORAGE CONDITIONS:	Shipped at 4°C. For long term storage store at -20°C in small aliquots to prevent freeze-thaw cycles
DESCRIPTION:	LILRB5 is a member of the leukocyte immunoglobulin-like receptor (LIR) family, which is found in a gene cluster at chromosomal region 19q13.4. The encoded protein belongs to the subfamily B class of LIR receptors which contain two or four extracellular immunoglobulin domains, a transmembrane domain, and two to four cytoplasmic immunoreceptor tyrosine-based inhibitory motifs (ITIMs). Several other LIR subfamily B receptors are expressed on immune cells where they bind to MHC class I molecules on antigen-presenting cells and inhibit stimulation of an immune response. Multiple transcript variants encoding different isoforms have been found for this gene.
APPLICATION:	WB; 1:500 – 1:2000, IHC; 1:50 – 1:200

Note: This information is only intended as a guide. The optimal dilutions must be determined by the user.



Immunohistochemical analysis of LILRB5 staining in human breast cancer formalin fixed paraffin embedded tissue section.



Western blot analysis of LILRB5 expression in MCF7 (A); mouse blood (B); rat blood (C) whole cell lysates.

RELATED PRODUCTS:

- PPAR gamma Antibody (Cat. No. 3809-100)
- DNMT1 Antibody (Cat. No. 3946-100)
- KLF4 Antibody (4G6E11) (Cat. No. 5300-100)
- NIF1 Antibody (Cat. No. 3737-100)

FOR RESEARCH USE ONLY! Not to be used on humans.