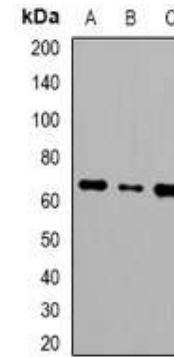


Anti-LINGO2 Antibody

CATALOG NO:	A1205-100
ALTERNATIVE NAMES:	LERN3; LRRN6C; Leucine-rich repeat and immunoglobulin-like domain-containing nogo receptor-interacting protein 2; Leucine-rich repeat neuronal protein 3; Leucine-rich repeat neuronal protein 6C
AMOUNT:	100 µl
IMMUNOGEN:	KLH-conjugated synthetic peptide encompassing a sequence within the center region of human LINGO2
HOST/ISOTYPE:	Rabbit IgG
CLONALITY:	Polyclonal
SPECIFICITY:	Recognizes endogenous levels of LINGO2 protein
SPECIES REACTIVITY:	Human, Mouse and Rat
PURIFICATION:	The antibody was purified by affinity chromatography
FORM:	Liquid
FORMULATION:	Supplied in 0.42% Potassium phosphate; 0.87% Sodium chloride; pH 7.3; 30% glycerol and 0.01% sodium azide
STORAGE CONDITIONS:	Shipped at 4°C. For long term storage store at -20°C in small aliquots to prevent freeze-thaw cycles
DESCRIPTION:	Leucine-rich repeat (LRR) and immunoglobulin (Ig) domain containing, Nogo receptor-interacting protein-1 also known as LINGO-1 is a protein encoded by the LINGO-1 gene in human. LINGO-1 protein has been demonstrated to play a role in the structural plasticity and integrity of dopaminergic neurons as well as their survival in animal models of Parkinson's disease (PD).
APPLICATION:	WB; 1:500 – 1:2000

Note: This information is only intended as a guide. The optimal dilutions must be determined by the user.



Western blot analysis of LINGO2 expression in HEK293T (A); NIH3T3 (B); PC12 (C) whole cell lysates

RELATED PRODUCTS:

- BDNF Antibody (Cat. No. 5004-100)
- Tau Antibody (Cat. No. 3549R-100)
- NAIP Antibody (Cat. No. 3228-100)
- Synapsin Antibody (Cat. No. 6008-100)

FOR RESEARCH USE ONLY! Not to be used on humans.