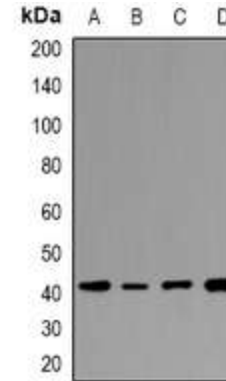


Anti-HAPLN4 Antibody

CATALOG NO:	A1206-100
ALTERNATIVE NAMES:	BRAL2; KIAA1926; Hyaluronan and proteoglycan link protein 4; Brain link protein 2
AMOUNT:	100 µl
IMMUNOGEN:	KLH-conjugated synthetic peptide encompassing a sequence within the center region of human HAPLN4
HOST/ISOTYPE:	Rabbit IgG
CLONALITY:	Polyclonal
SPECIFICITY:	Recognizes endogenous levels of HAPLN4 protein
SPECIES REACTIVITY:	Human, Mouse and Rat
PURIFICATION:	The antibody was purified by affinity chromatography
FORM:	Liquid
FORMULATION:	Supplied in 0.42% Potassium phosphate; 0.87% Sodium chloride; pH 7.3; 30% glycerol and 0.01% sodium azide
STORAGE CONDITIONS:	Shipped at 4°C. For long term storage store at -20°C in small aliquots to prevent freeze-thaw cycles
DESCRIPTION:	Binds to hyaluronic acid and may be involved in formation of the extracellular matrix.
APPLICATION:	WB; 1:500 – 1:2000

Note: This information is only intended as a guide. The optimal dilutions must be determined by the user.



Western blot analysis of HAPLN4 expression in Jurkat (A); THP1 (B); mouse spleen (C); rat spleen (D) whole cell lysates

RELATED PRODUCTS:

- Anti-ACTA2 Rabbit Monoclonal Antibody (Cat. No. A1118-50)
- Beta Actin Monoclonal Antibody (Cat. No. A1031-100)
- RhoGDI Antibody (Cat. No. A1161-100)
- Tubulin Antibody (Cat. No. 3708-100)

FOR RESEARCH USE ONLY! Not to be used on humans.