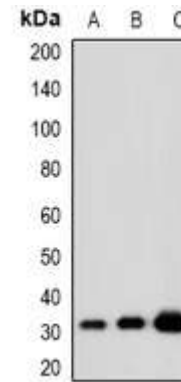


Anti-KLF13 Antibody

CATALOG NO:	A1209-100
ALTERNATIVE NAMES:	BTEB3; NSLP1; Krueppel-like factor 13; Basic transcription element-binding protein 3; BTE-binding protein 3; Novel Sp1-like zinc finger transcription factor 1; RANTES factor of late activated T-lymphocytes 1; RFLAT-1; Transcription factor BTEB3; Transcription factor NSLP1
AMOUNT:	100 µl
IMMUNOGEN:	KLH-conjugated synthetic peptide encompassing a sequence within the center region of human KLF13
HOST/ISOTYPE:	Rabbit IgG
CLONALITY:	Polyclonal
SPECIFICITY:	Recognizes endogenous levels of KLF13 (AcK166) protein
SPECIES REACTIVITY:	Human, Mouse and Rat
PURIFICATION:	The antibody was purified by affinity chromatography
FORM:	Liquid
FORMULATION:	Supplied in 0.42% Potassium phosphate; 0.87% Sodium chloride; pH 7.3; 30% glycerol and 0.01% sodium azide
STORAGE CONDITIONS:	Shipped at 4°C. For long term storage store at -20°C in small aliquots to prevent freeze-thaw cycles
DESCRIPTION:	Represses transcription by binding to the BTE site, a GC-rich DNA element, in competition with the activator SP1. It also represses transcription by interacting with the corepressor Sin3A and HDAC1. Activates RANTES expression in T-cells
APPLICATION:	WB; 1:500 – 1:2000

Note: This information is only intended as a guide. The optimal dilutions must be determined by the user.



Western blot analysis of KLF13 (AcK166) expression in HeLa (A); NIH3T3 (B); PC12 (C) whole cell lysates

RELATED PRODUCTS:

- PCNA Antibody (Cat. No. 3350R-100)
- EHMT2 Antibody (Cat. No. 6152-100)
- H3K36me1 polyclonal antibody (Cat. No. 6817-25)
- HDAC9 Antibody (Cat. No. 3609-100)

FOR RESEARCH USE ONLY! Not to be used on humans.