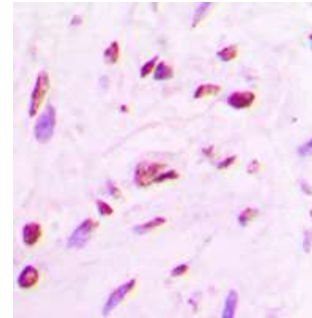


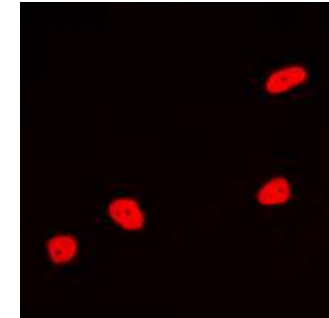
Anti-MEF2A Antibody

CATALOG NO:	A1211-100
ALTERNATIVE NAMES:	MEF2; Myocyte-specific enhancer factor 2A; Serum response factor-like protein 1
AMOUNT:	100 µl
IMMUNOGEN:	KLH-conjugated synthetic peptide encompassing a sequence within the C-term region of human MEF2A
HOST/ISOTYPE:	Rabbit IgG
CLONALITY:	Polyclonal
SPECIFICITY:	Recognizes endogenous levels of MEF2A protein
SPECIES REACTIVITY:	Human, Mouse and Rat
PURIFICATION:	The antibody was purified by affinity chromatography
FORM:	Liquid
FORMULATION:	Supplied in 0.42% Potassium phosphate; 0.87% Sodium chloride; pH 7.3; 30% glycerol and 0.01% sodium azide
STORAGE CONDITIONS:	Shipped at 4°C. For long term storage store at -20°C in small aliquots to prevent freeze-thaw cycles
DESCRIPTION:	Transcriptional activator which binds specifically to the MEF2 element, 5'-YTA[AT]4TAR-3', found in numerous muscle-specific genes. Also involved in the activation of numerous growth factor- and stress-induced genes. Mediates cellular functions not only in skeletal and cardiac muscle development, but also in neuronal differentiation and survival. Plays diverse roles in the control of cell growth, survival and apoptosis via p38 MAPK signaling in muscle-specific and/or growth factor-related transcription. In cerebellar granule neurons, phosphorylated and sumoylated MEF2A represses transcription of NUR77 promoting synaptic differentiation. Associates with chromatin to the ZNF16 promoter.
APPLICATION:	WB: 1/500 - 1/1000; IHC: 1/100 - 1/200; IF/IC: 1/100 - 1/500

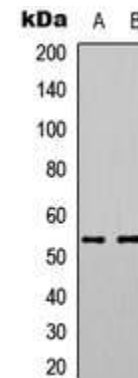
Note: This information is only intended as a guide. The optimal dilutions must be determined by the user.



Immunohistochemical analysis of MEF2A staining in human lung cancer formalin fixed paraffin embedded tissue



Immunofluorescent analysis of MEF2A staining in HeLa cells



Western blot analysis of MEF2A expression in HeLa (A); Saos2 (B) whole cell lysates

RELATED PRODUCTS:

- PPAR gamma Antibody (Cat. No. 3809-100)
- DNMT1 Antibody (Cat. No. 3946-100)
- KLF4 Antibody (4G6E11) (Cat. No. 5300-100)
- NIF1 Antibody (Cat. No. 3737-100)

FOR RESEARCH USE ONLY! Not to be used on humans.