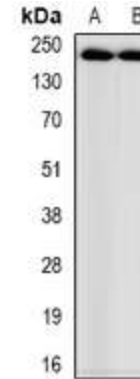


## Anti- Myosin-pan Antibody

<b>CATALOG NO:</b>	A1213-100
<b>ALTERNATIVE NAMES:</b>	MYH1; Myosin-1; Myosin heavy chain 1; Myosin heavy chain 2x; MyHC-2x; Myosin heavy chain IIx/d; MyHC-IIx/d; Myosin heavy chain skeletal muscle adult 1; MYH2; MYHSA2; Myosin-2; Myosin heavy chain 2; Myosin heavy chain 2a; MyHC-2a; Myosin heavy chain IIa; MyHC-IIa; Myosin heavy chain skeletal muscle adult 2; MYH3; Myosin-3; Muscle embryonic myosin heavy chain; Myosin heavy chain 3; Myosin heavy chain fast skeletal muscle embryonic; SMHCE; MYH4; Myosin-4; Myosin heavy chain 2b; MyHC-2b; Myosin heavy chain 4; Myosin heavy chain IIb; MyHC-IIb; Myosin heavy chain skeletal muscle fetal; MYH6; MYHCA; Myosin-6; Myosin heavy chain 6; Myosin heavy chain cardiac muscle alpha isoform; MyHC-alpha; MYH7; MYHCB; Myosin-7; Myosin heavy chain 7; Myosin heavy chain slow isoform; MyHC-slow; Myosin heavy chain cardiac muscle beta isoform; MyHC-beta; MYH8; Myosin-8; Myosin heavy chain 8; Myosin heavy chain skeletal muscle perinatal; MyHC-perinatal
<b>AMOUNT:</b>	100 µl
<b>IMMUNOGEN:</b>	KLH-conjugated synthetic peptide encompassing a sequence within the center region of human Myosin-pan
<b>HOST/ISOTYPE:</b>	Rabbit IgG
<b>CLONALITY:</b>	Polyclonal
<b>SPECIFICITY:</b>	Recognizes endogenous levels of Myosin-pan protein
<b>SPECIES REACTIVITY:</b>	Human, Mouse and Rat
<b>PURIFICATION:</b>	The antibody was purified by affinity chromatography
<b>FORM:</b>	Liquid
<b>FORMULATION:</b>	Supplied in 0.42% Potassium phosphate; 0.87% Sodium chloride; pH 7.3; 30% glycerol and 0.01% sodium azide
<b>STORAGE CONDITIONS:</b>	Shipped at 4°C. For long term storage store at -20°C in small aliquots to prevent freeze-thaw cycles
<b>DESCRIPTION:</b>	Involved in muscle contraction
<b>APPLICATION:</b>	WB; 1:500 – 1:2000

**Note:** This information is only intended as a guide. The optimal dilutions must be determined by the user.



**Western blot analysis of Myosin-pan (AcK505) expression in mouse heart (A); rat heart (B) whole cell lysates.**

### RELATED PRODUCTS:

- Anti-MYBPC3 Antibody (Cat. No. A1182-100)
- Phospho-MYPT1 (Thr696) Antibody (Cat. No. A1151-100)
- H3K36me1 polyclonal antibody (Cat. No. 6817-25)
- HDAC9 Antibody (Cat. No. 3609-100)

**FOR RESEARCH USE ONLY! Not to be used on humans.**