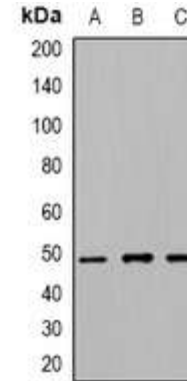


Anti- Beta-tubulin Antibody

CATALOG NO:	A1216-100
ALTERNATIVE NAMES:	TUBB2A; TUBB2; Tubulin beta-2A chain; TUBB2B; Tubulin beta-2B chain; TUBB3; TUBB4; Tubulin beta-3 chain; Tubulin beta-4 chain; Tubulin beta-III; TUBB4A; TUBB4; TUBB5; Tubulin beta-4A chain; Tubulin 5 beta; Tubulin beta-4 chain; TUBB4B; TUBB2C; Tubulin beta-4B chain; Tubulin beta-2 chain; Tubulin beta-2C chain; TUBB; TUBB5; OK/SW-cl.56; Tubulin beta chain; Tubulin beta-5 chain; TUBB6; Tubulin beta-6 chain
AMOUNT:	100 µl
IMMUNOGEN:	KLH-conjugated synthetic peptide encompassing a sequence within the center region of human Beta-tubulin
HOST/ISOTYPE:	Rabbit IgG
CLONALITY:	Polyclonal
SPECIFICITY:	Recognizes endogenous levels of Beta-tubulin protein
SPECIES REACTIVITY:	Human, Mouse and Rat
PURIFICATION:	The antibody was purified by affinity chromatography
FORM:	Liquid
FORMULATION:	Supplied in 0.42% Potassium phosphate; 0.87% Sodium chloride; pH 7.3; 30% glycerol and 0.01% sodium azide
STORAGE CONDITIONS:	Shipped at 4°C. For long term storage store at -20°C in small aliquots to prevent freeze-thaw cycles
DESCRIPTION:	Tubulin is the major constituent of microtubules. It binds two moles of GTP, one at an exchangeable site on the beta chain and one at a non-exchangeable site on the alpha chain
APPLICATION:	WB; 1:500 – 1:2000

Note: This information is only intended as a guide. The optimal dilutions must be determined by the user.



Western blot analysis of Beta-tubulin (AcK379) expression in HeLa (A); NIH3T3 (B); PC12 (C) whole cell lysates

RELATED PRODUCTS:

- Anti-ACTA2 Rabbit Monoclonal Antibody (Cat. No. A1118-50)
- Beta Actin Monoclonal Antibody (Cat. No. A1031-100)
- Phospho-MYPT1 (Thr696) Antibody (Cat. No. A1151-100)
- Tubulin Antibody (Cat. No. 3708-100)

FOR RESEARCH USE ONLY! Not to be used on humans.