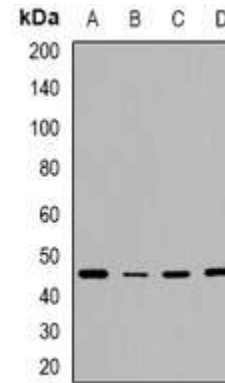


Anti-RhD Antibody

CATALOG NO:	A1217-100
ALTERNATIVE NAMES:	Blood group Rh(D) polypeptide; RHXIII; Rh polypeptide 2; RhPII; Rhesus D antigen; CD240D
AMOUNT:	100 µl
IMMUNOGEN:	KLH-conjugated synthetic peptide encompassing a sequence within the center region of human RhD
HOST/ISOTYPE:	Rabbit IgG
CLONALITY:	Polyclonal
SPECIFICITY:	Recognizes endogenous levels of RhD protein
SPECIES REACTIVITY:	Human, Mouse and Rat
PURIFICATION:	The antibody was purified by affinity chromatography
FORM:	Liquid
FORMULATION:	Supplied in 0.42% Potassium phosphate; 0.87% Sodium chloride; pH 7.3; 30% glycerol and 0.01% sodium azide
STORAGE CONDITIONS:	Shipped at 4°C. For long term storage store at -20°C in small aliquots to prevent freeze-thaw cycles
DESCRIPTION:	May be part of an oligomeric complex which is likely to have a transport or channel function in the erythrocyte membrane.
APPLICATION:	WB; 1:500 – 1:2000

Note: This information is only intended as a guide. The optimal dilutions must be determined by the user.



Western blot analysis of RhD expression in HeLa (A); NIH3T3 (B); mouse brain (C); rat brain (D) whole cell lysates

RELATED PRODUCTS:

- FKBP12 Antibody (Cat. No. 3635-100)
- FKBP38 Antibody (Cat. No. 3666-100)
- FKBP52/Hsp56 Antibody (Cat. No. 3880-100)
- CD276 Monoclonal Antibody (Cat. No. A1070-50)

FOR RESEARCH USE ONLY! Not to be used on humans.