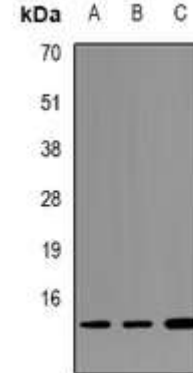


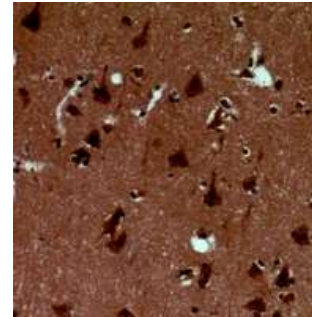
Phospho Alpha-synuclein (Tyr125) Antibody

CATALOG NO:	A1219-100
ALTERNATIVE NAMES:	NACP; PARK1; Alpha-synuclein; Non-A beta component of AD amyloid; Non-A4 component of amyloid precursor; NACP
AMOUNT:	100 µl
IMMUNOGEN:	KLH-conjugated synthetic peptide encompassing a sequence within the center region of human Alpha-synuclein
HOST/ISOTYPE:	Rabbit IgG
CLONALITY:	Polyclonal
SPECIFICITY:	Recognizes endogenous levels of Alpha-synuclein (pY125) protein
SPECIES REACTIVITY:	Human, Mouse and Rat
PURIFICATION:	The antibody was purified by affinity chromatography
FORM:	Liquid
FORMULATION:	Supplied in 0.42% Potassium phosphate; 0.87% Sodium chloride; pH 7.3; 30% glycerol and 0.01% sodium azide
STORAGE CONDITIONS:	Shipped at 4°C. For long term storage store at -20°C in small aliquots to prevent freeze-thaw cycles
DESCRIPTION:	May be involved in the regulation of dopamine release and transport. Induces fibrillization of microtubule-associated protein tau. Reduces neuronal responsiveness to various apoptotic stimuli, leading to a decreased caspase-3 activation.
APPLICATION:	WB; 1:500 – 1:2000

Note: This information is only intended as a guide. The optimal dilutions must be determined by the user.



Western blot analysis of Alpha-synuclein (pY125) expression in HeLa (A); mouse brain (B); rat brain (C) whole cell lysates



Immunohistochemical analysis of Alpha-synuclein (pY125) staining in human brain formalin fixed paraffin embedded tissue section.

RELATED PRODUCTS:

- Anti-GFAP Rabbit Monoclonal Antibody (Cat. No. A1124-50)
- Anti-LINGO2 Antibody (Cat. No. A1205-100)
- Anti-TRAK2 Antibody (Cat. No. A1186-100)
- BDNF Antibody (Cat. No. 5004-100)

FOR RESEARCH USE ONLY! Not to be used on humans.