

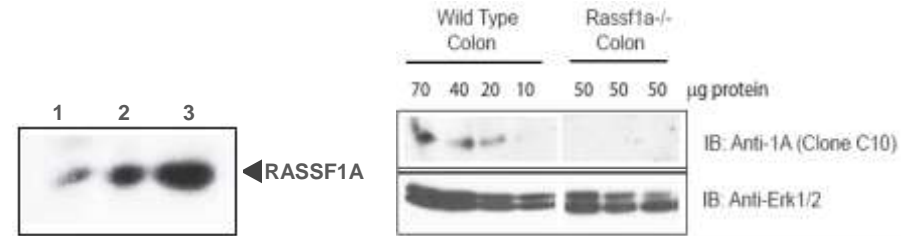
## RASSF1A Antibody

<b>CATALOG NO:</b>	A1221-100
<b>ALTERNATIVE NAMES:</b>	Ras association domain-containing protein 1, RDA32
<b>CLONE:</b>	C10
<b>AMOUNT:</b>	100 µg
<b>CONCENTRATION:</b>	1 mg/ml
<b>Host/ISOTYPE:</b>	Mouse IgM κ
<b>IMMUNOGEN:</b>	Full length protein
<b>MOLECULAR WEIGHT:</b>	38.8 kDa
<b>SPECIES REACTIVITY:</b>	Human, Mouse
<b>FORM:</b>	Liquid
<b>FORMULATION:</b>	In phosphate buffer saline
<b>STORAGE CONDITIONS:</b>	For long term storage store at -20°C in small aliquots to prevent freeze-thaw cycles

**DESCRIPTION:** RASSF1A is one of the most epigenetically silenced gene in human cancers and an important negative regulator of NFκB activation and potential tumor suppressor. It is required for death receptor-dependent apoptosis. It also mediates activation of STK3/MST2 and STK4/MST1 during Fas-induced apoptosis by preventing their dephosphorylation. When associated with MOAP1, promotes BAX conformational change and translocation to mitochondrial membranes in response to TNF and TNFSF10 stimulation. Isoform A interacts with CDC20, an activator of the anaphase-promoting complex, APC, resulting in the inhibition of APC activity and mitotic progression. RASSF1A inhibits proliferation by negatively regulating cell cycle progression at the level of G1/S-phase transition by regulating accumulation of cyclin D1 protein. Isoform C has been shown not to perform these roles; no function has been identified for this isoform. Isoform A disrupts interactions among MDM2, DAXX and USP7, thus contributing to the efficient activation of TP53 by promoting MDM2 self-ubiquitination in cell-cycle checkpoint control in response to DNA damage.

**APPLICATION:** WB- 1:50, IHC- 1:50, IP- 1.5 µg

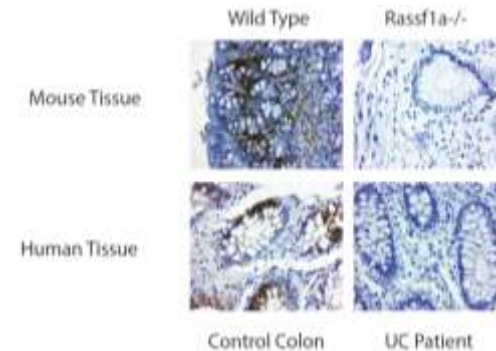
**Note:** This information is only intended as a guide. The optimal dilutions must be determined by the user.



**Western blot analysis of RASSF1A Antibody in:**

Lane 1: HCT116 cell lysate  
Lane 2: ModeK cell lysate  
Lane 3: 4T1 cell lysate

**Western blot detection of endogenous RASSF1A in mouse colon tissues from a wild type colon tissue sample (decreasing amounts shown) and from three independently isolated RASSF1A-/- knockout colon tissues using RASSF1A antibody**



**Analysis of RASSF1A immunostaining in mouse and human colon tissues via immunohistochemical analysis using RASSF1A antibody**

**RELATED PRODUCTS:**

- Rab5 Antibody (Cat. No. 3483-100)
- RASSF1A, human recombinant (P1114-20, -100)

**FOR RESEARCH USE ONLY! Not to be used on humans.**

