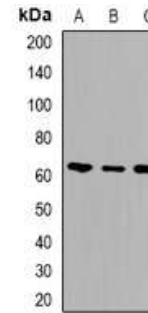


Anti-Alpha-Taxilin Antibody

CATALOG NO:	A1223-100
ALTERNATIVE NAMES:	TXLNA, TXLN
AMOUNT:	100 µl
IMMUNOGEN:	KLH-conjugated synthetic peptide encompassing a sequence within the center region of human Alpha-taxilin
HOST/ISOTYPE:	Rabbit IgG
CLONALITY:	Polyclonal
SPECIFICITY:	Recognizes endogenous levels of Alpha-taxilin protein
SPECIES REACTIVITY:	Human, Mouse and Rat
PURIFICATION:	The antibody was purified by affinity chromatography
FORM:	Liquid
FORMULATION:	Supplied in 0.42% Potassium phosphate; 0.87% Sodium chloride; pH 7.3; 30% glycerol and 0.01% sodium azide
STORAGE CONDITIONS:	Shipped at 4°C. For long term storage store at -20°C in small aliquots to prevent freeze-thaw cycles
DESCRIPTION:	May be involved in intracellular vesicle traffic and potentially in calcium-dependent exocytosis in neuroendocrine cells
APPLICATION:	WB; 1:500 – 1:2000

Note: This information is only intended as a guide. The optimal dilutions must be determined by the user.



Western blot analysis of Alpha-taxilin expression in Jurkat (A); mouse spleen (B); rat spleen (C) whole cell lysates

RELATED PRODUCTS:

- IL-6 Antibody (Cat. No. 5143-100)
- IL-1 Alpha Antibody (Cat. No. 5126-100)
- IL-1 alpha Antibody (Cat. No. 5125-100)
- IL-1 beta Antibody (Cat. No. 5129-100)
- IL-1 beta Antibody (Cat. No. 5128-100)
- IL-10 Antibody (Cat. No. 5156-100)

FOR RESEARCH USE ONLY! Not to be used on humans.