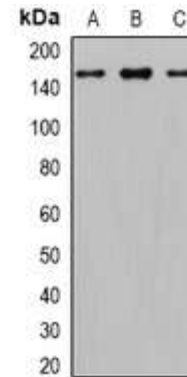


## Anti-GLI1 Antibody

<b>CATALOG NO:</b>	A1224-100
<b>ALTERNATIVE NAMES:</b>	GLI, Zinc finger protein GLI1, Glioma-associated oncogene, Oncogene GLI
<b>AMOUNT:</b>	100 µl
<b>IMMUNOGEN:</b>	KLH-conjugated synthetic peptide encompassing a sequence within the center region of human GLI1
<b>HOST/ISOTYPE:</b>	Rabbit IgG
<b>CLONALITY:</b>	Polyclonal
<b>SPECIFICITY:</b>	Recognizes endogenous levels of GLI1 protein
<b>SPECIES REACTIVITY:</b>	Human, Mouse and Rat
<b>PURIFICATION:</b>	The antibody was purified by affinity chromatography
<b>FORM:</b>	Liquid
<b>FORMULATION:</b>	Supplied in 0.42% Potassium phosphate; 0.87% Sodium chloride; pH 7.3; 30% glycerol and 0.01% sodium azide
<b>STORAGE CONDITIONS:</b>	Shipped at 4°C. For long term storage store at -20°C in small aliquots to prevent freeze-thaw cycles
<b>DESCRIPTION:</b>	Acts as a transcriptional activator Binds to the DNA consensus sequence 5'-GACCACCCA-3'. May regulate the transcription of specific genes during normal development. May play a role in craniofacial development and digital development, as well as development of the central nervous system and gastrointestinal tract. Mediates SHH signaling. Plays a role in cell proliferation and differentiation via its role in SHH signaling
<b>APPLICATION:</b>	WB; 1:500 – 1:2000

**Note:** This information is only intended as a guide. The optimal dilutions must be determined by the user.



Western blot analysis of GLI1 expression in PC3 (A); mouse brain (B); rat brain (C) whole cell lysates.

### RELATED PRODUCTS:

- PPAR gamma Antibody (Cat. No. 3809-100)
- DNMT1 Antibody (Cat. No. 3946-100)
- KLF4 Antibody (4G6E11) (Cat. No. 5300-100)
- NIF1 Antibody (Cat. No. 3737-100)

**FOR RESEARCH USE ONLY! Not to be used on humans.**