

Anti- ALPK1 Antibody

CATALOG NO: A1229-100

ALTERNATIVE NAMES: KIAA1527; LAK; Alpha-protein kinase 1; Chromosome 4 kinase; Lymphocyte alpha-protein kinase

AMOUNT: 100 µl

IMMUNOGEN: KLH-conjugated synthetic peptide encompassing a sequence within the center region of human ALPK1

HOST/ISOTYPE: Rabbit IgG

CLONALITY: Polyclonal

SPECIFICITY: Recognizes endogenous levels of ALPK1 protein

SPECIES REACTIVITY: Human, Mouse and Rat

PURIFICATION: The antibody was purified by affinity chromatography

FORM: Liquid

FORMULATION: Supplied in 0.42% Potassium phosphate; 0.87% Sodium chloride; pH 7.3; 30% glycerol and 0.01% sodium azide

STORAGE CONDITIONS: Shipped at 4°C. For long term storage store at -20°C in small aliquots to prevent freeze-thaw cycles

DESCRIPTION: Kinase that recognizes phosphorylation sites in which the surrounding peptides have an alpha-helical conformation

APPLICATION: WB; 1:500 – 1:2000, IH; 1:50 – 1:200; IF/IC; 1:50 – 1:100

Note: This information is only intended as a guide. The optimal dilutions must be determined by the user.

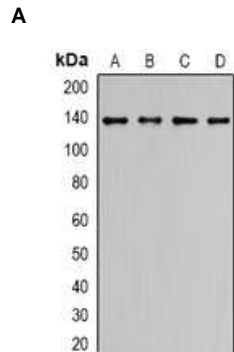


Fig A. Western blot analysis of ALPK1 expression in LO2 (A); HCT116 (B); COLO205 (C); HepG2 (D) whole cell lysates.

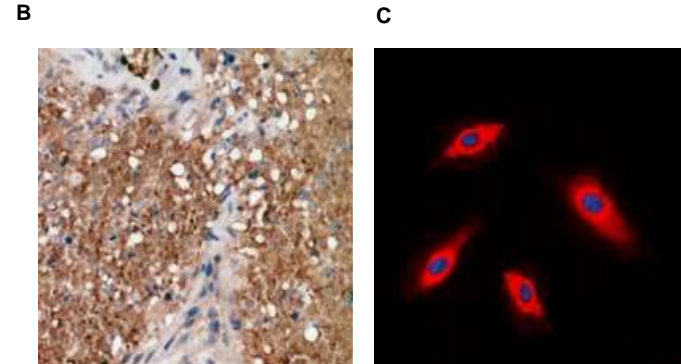


Fig. B Immunohistochemical analysis of ALPK1 staining in human breast cancer formalin fixed paraffin embedded tissue section

Fig. C Immunofluorescent analysis of ALPK1 staining in HepG2 cells

RELATED PRODUCTS:

- Phospho-AKT1 (Ser473) Polyclonal Antibody (Cat. No. A1041-100)
- Phospho-FRS2 (Tyr-349) Polyclonal Antibody (Cat. No. A1042-100)
- Phospho-GSK3 (Tyr216) polyclonal antibody (Cat. No. A1037-100)
- Phospho-IGFIR (Tyr980) polyclonal Antibody (Cat. No. A1040-100)

FOR RESEARCH USE ONLY! Not to be used on humans.

