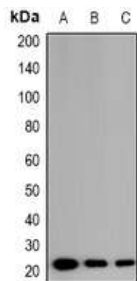


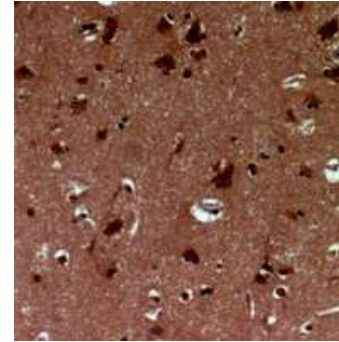
Anti-EID1 Antibody

CATALOG NO:	A1230-100
ALTERNATIVE NAMES:	C15orf3, CRI1, RBP21, EP300-interacting inhibitor of differentiation 1, 21 kDa pRb-associated protein, CREBBP/EP300 inhibitory protein 1, E1A-like inhibitor of differentiation 1, EID-1
AMOUNT:	100 µl
IMMUNOGEN:	KLH-conjugated synthetic peptide encompassing a sequence within the center region of human EID1
HOST/ISOTYPE:	Rabbit IgG
CLONALITY:	Polyclonal
SPECIFICITY:	Recognizes endogenous levels of EID1 protein
SPECIES REACTIVITY:	Human
PURIFICATION:	The antibody was purified by affinity chromatography
FORM:	Liquid
FORMULATION:	Supplied in 0.42% Potassium phosphate; 0.87% Sodium chloride; pH 7.3; 30% glycerol and 0.01% sodium azide
STORAGE CONDITIONS:	Shipped at 4°C. For long term storage store at -20°C in small aliquots to prevent freeze-thaw cycles
DESCRIPTION:	Interacts with RB1 and EP300 and acts as a repressor of MYOD1 transactivation. Inhibits EP300 and CBP histone acetyltransferase activity. May be involved in coupling cell cycle exit to the transcriptional activation of genes required for cellular differentiation. May act as a candidate coinhibitory factor for NR0B2 that can be directly linked to transcription inhibitory mechanisms
APPLICATION:	WB; 1:500 – 1:2000, IH; 1:50 – 1:200; IF/IC: 1:50 – 1:100



Western blot analysis of EID1 expression in PC3 (A); HeLa (B); HCT116 (C) whole cell lysates

Note: This information is only intended as a guide. The optimal dilutions must be determined by the user.



Immunohistochemical analysis of EID1 staining in human brain formalin fixed paraffin embedded tissue section.



Immunofluorescent analysis of EID1 staining in HeLa cells

RELATED PRODUCTS:

- Bax Antibody (Cat. No. 3032-30T, -100)
- Bim/Bod Antibody (Cat. No. 3124-100)
- Apg5/Atg5 Antibody (Cat. No. 3886-100)
- APG7/ATG7 Antibody (Cat. No. 3907-100)

FOR RESEARCH USE ONLY! Not to be used on humans.