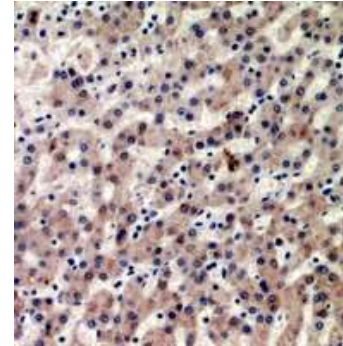


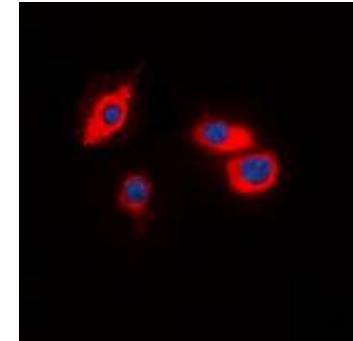
Anti-CIDEB Antibody

CATALOG NO:	A1231-100
ALTERNATIVE NAMES:	Cell death activator CIDE-B; Cell death-inducing DFFA-like effector B
AMOUNT:	100 µl
IMMUNOGEN:	KLH-conjugated synthetic peptide encompassing a sequence within the center region of human CIDEB
HOST/ISOTYPE:	Rabbit IgG
CLONALITY:	Polyclonal
SPECIFICITY:	Recognizes endogenous levels of CIDEB protein
SPECIES REACTIVITY:	Human, Mouse and Rat
PURIFICATION:	The antibody was purified by affinity chromatography
FORM:	Liquid
FORMULATION:	Supplied in 0.42% Potassium phosphate; 0.87% Sodium chloride; pH 7.3; 30% glycerol and 0.01% sodium azide
STORAGE CONDITIONS:	Shipped at 4°C. For long term storage store at -20°C in small aliquots to prevent freeze-thaw cycles
DESCRIPTION:	Cell death activator protein is highly expressed in liver and small intestine and, at lower levels, in colon, kidney and spleen. Its well-known function is to activate apoptosis.
APPLICATION:	WB; 1:500 – 1:2000, IH; 1:50 – 1:200, IF/IC; 1:50 – 1:100

Note: This information is only intended as a guide. The optimal dilutions must be determined by the user.



Immunohistochemical analysis of CIDEB staining in human liver cancer formalin fixed paraffin embedded tissue section.

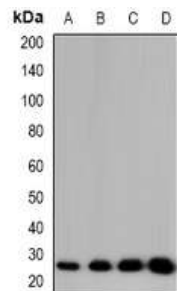


Immunofluorescent analysis of CIDEB staining in HT29 cells

RELATED PRODUCTS:

- Lamin B1 Antibody (Cat. No. 3807-100)
- Caspase-3 Antibody (Cat. No. 3138-100)
- NFkB p65 Antibody (Cat. No. 3038-100)
- Superoxide Dismutase 2 (SOD-2) Antibody (2A1) (Cat. No. 6169-100)

FOR RESEARCH USE ONLY! Not to be used on humans.



Western blot analysis of CIDEB expression in HT29 (A); RAW264.7 (B); mouse spleen (C); rat spleen (D) whole cell lysates