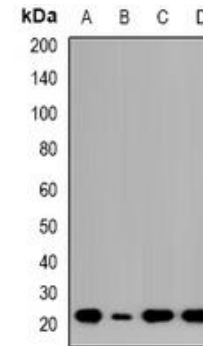


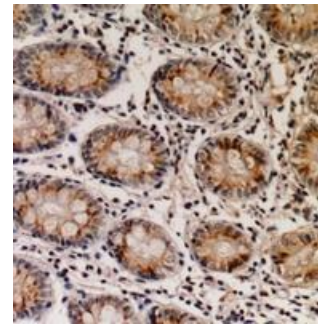
## Anti-NTPCR Antibody

<b>CATALOG NO:</b>	A1232-100
<b>ALTERNATIVE NAMES:</b>	C1orf57, Cancer-related nucleoside-triphosphatase, NTPase, Nucleoside triphosphate phosphohydrolase
<b>AMOUNT:</b>	100 µl
<b>IMMUNOGEN:</b>	KLH-conjugated synthetic peptide encompassing a sequence within the center region of human NTPCR
<b>HOST/ISOTYPE:</b>	Rabbit IgG
<b>CLONALITY:</b>	Polyclonal
<b>SPECIFICITY:</b>	Recognizes endogenous levels of NTPCR protein
<b>SPECIES REACTIVITY:</b>	Human
<b>PURIFICATION:</b>	The antibody was purified by affinity chromatography
<b>FORM:</b>	Liquid
<b>FORMULATION:</b>	Supplied in 0.42% Potassium phosphate; 0.87% Sodium chloride; pH 7.3; 30% glycerol and 0.01% sodium azide
<b>STORAGE CONDITIONS:</b>	Shipped at 4°C. For long term storage store at -20°C in small aliquots to prevent freeze-thaw cycles
<b>DESCRIPTION:</b>	Has nucleotide phosphatase activity towards ATP, GTP, CTP, TTP and UTP. Hydrolyzes nucleoside diphosphates with lower efficiency.
<b>APPLICATION:</b>	WB; 1:500 – 1:2000; IH; 1:50 – 1:200

**Note:** This information is only intended as a guide. The optimal dilutions must be determined by the user.



Western blot analysis of NTPCR expression in HCT116 (A); Jurkat (B); COLO205 (C); LO2 (D) whole cell lysates.



Immunohistochemical analysis of NTPCR staining in human colon cancer formalin fixed paraffin embedded tissue section.

### RELATED PRODUCTS:

- PPAR gamma Antibody (Cat. No. 3809-100)
- DNMT1 Antibody (Cat. No. 3946-100)
- KLF4 Antibody (4G6E11) (Cat. No. 5300-100)
- NIF1 Antibody (Cat. No. 3737-100)

**FOR RESEARCH USE ONLY! Not to be used on humans.**