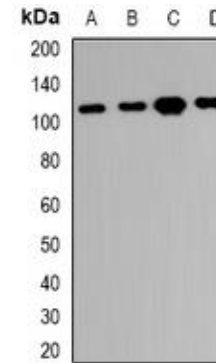


## Anti-RBM26 Antibody

<b>CATALOG NO:</b>	A1234-100
<b>ALTERNATIVE NAMES:</b>	C13orf10; RNA-binding protein 26; CTCL tumor antigen se70-2; RNA-binding motif protein 26
<b>AMOUNT:</b>	100 µl
<b>IMMUNOGEN:</b>	KLH-conjugated synthetic peptide encompassing a sequence within the center region of human RBM26
<b>HOST/ISOTYPE:</b>	Rabbit IgG
<b>CLONALITY:</b>	Polyclonal
<b>SPECIFICITY:</b>	Recognizes endogenous levels of RBM26 protein
<b>SPECIES REACTIVITY:</b>	Human, Mouse and Rat
<b>PURIFICATION:</b>	The antibody was purified by affinity chromatography
<b>FORM:</b>	Liquid
<b>FORMULATION:</b>	Supplied in 0.42% Potassium phosphate; 0.87% Sodium chloride; pH 7.3; 30% glycerol and 0.01% sodium azide
<b>STORAGE CONDITIONS:</b>	Shipped at 4°C. For long term storage store at -20°C in small aliquots to prevent freeze-thaw cycles
<b>DESCRIPTION:</b>	RBM26 (RNA binding motif protein 26) bears two RNA recognition motif (RRM) domains and a C3H1-type zinc finger. The function of RBM26 has not been characterized. Alternate names for RBM26 include CTCL tumor antigen se70-2, acidic rich RS domain containing 2, ARRS2, ZC3H17, PRO1777, C13orf10, and FLJ20957.
<b>APPLICATION:</b>	WB; 1:500 – 1:2000

**Note:** This information is only intended as a guide. The optimal dilutions must be determined by the user.



Western blot analysis of RBM26 expression in HeLa (A); Jurkat (B); SP20 (C); H9C2 (D) whole cell lysates.

### RELATED PRODUCTS:

- PPAR gamma Antibody (Cat. No. 3809-100)
- DNMT1 Antibody (Cat. No. 3946-100)
- KLF4 Antibody (4G6E11) (Cat. No. 5300-100)
- NIF1 Antibody (Cat. No. 3737-100)

**FOR RESEARCH USE ONLY! Not to be used on humans.**