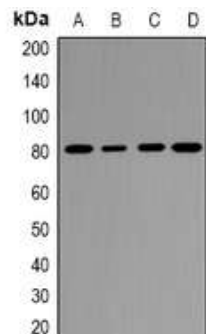


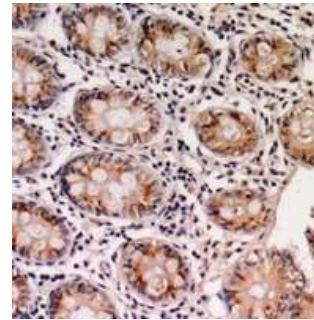
## Anti-EPS8L1 Antibody

<b>CATALOG NO:</b>	A1238-100
<b>ALTERNATIVE NAMES:</b>	DRC3; EPS8R1; Epidermal growth factor receptor kinase substrate 8-like protein 1; EPS8-like protein 1; Epidermal growth factor receptor pathway substrate 8-related protein 1; EPS8-related protein 1
<b>AMOUNT:</b>	100 µl
<b>IMMUNOGEN:</b>	KLH-conjugated synthetic peptide encompassing a sequence within the center region of human EPS8L1
<b>HOST/ISOTYPE:</b>	Rabbit IgG
<b>CLONALITY:</b>	Polyclonal
<b>SPECIFICITY:</b>	Recognizes endogenous levels of EPS8L1 protein
<b>SPECIES REACTIVITY:</b>	Human, Mouse and Rat
<b>PURIFICATION:</b>	The antibody was purified by affinity chromatography
<b>FORM:</b>	Liquid
<b>FORMULATION:</b>	Supplied in 0.42% Potassium phosphate; 0.87% Sodium chloride; pH 7.3; 30% glycerol and 0.01% sodium azide
<b>STORAGE CONDITIONS:</b>	Shipped at 4°C. For long term storage store at -20°C in small aliquots to prevent freeze-thaw cycles
<b>DESCRIPTION:</b>	Stimulates guanine exchange activity of SOS1. May play a role in membrane ruffling and remodeling of the actin cytoskeleton
<b>APPLICATION:</b>	WB; 1:500 – 1:2000

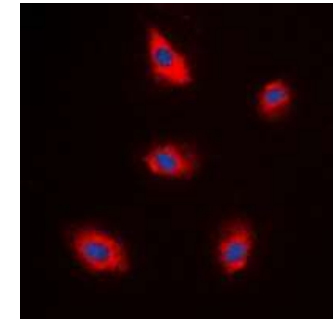
**Note:** This information is only intended as a guide. The optimal dilutions must be determined by the user.



**Western blot analysis of EPS8L1 expression in Hela (A); COLO205 (B); mouse uterus (C); rat placenta (D) whole cell lysates**



**Immunohistochemical analysis of EPS8L1 staining in human colon cancer formalin fixed paraffin embedded tissue section.**



**Immunofluorescent analysis of EPS8L1 staining in A549 cells**

### RELATED PRODUCTS:

- PPAR gamma Antibody (Cat. No. 3809-100)
- DNMT1 Antibody (Cat. No. 3946-100)
- KLF4 Antibody (4G6E11) (Cat. No. 5300-100)
- NIF1 Antibody (Cat. No. 3737-100)

**FOR RESEARCH USE ONLY! Not to be used on humans.**