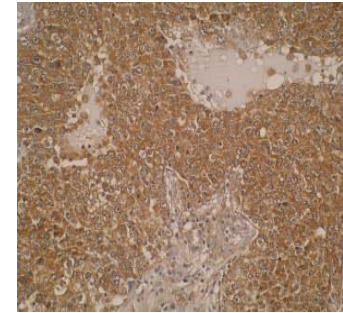
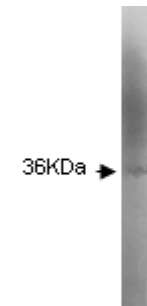


Anti-WFDC5 Antibody

CATALOG NO:	A1239-100
ALTERNATIVE NAMES:	PRG5protease inhibitor WAP1, Putative protease inhibitor WAP1, WAP four-disulfide core domain 5, WAP four-disulfide core domain protein 5, WAP1p53-responsive gene 5 protein
AMOUNT:	100 µg
IMMUNOGEN:	Ovalbumin-conjugated synthetic peptide TERVHDGRPG
MOLECULAR WEIGHT:	36 kDa
HOST/ISOTYPE:	Mouse IgG1 kappa
CLONE:	M47-P2D5
SPECIES REACTIVITY:	Human
PURIFICATION:	Protein G purified
FORM:	Liquid
FORMULATION:	Supplied in PBS with 0.02% sodium azide
STORAGE CONDITIONS:	For long term storage store at -20°C in small aliquots to prevent freeze-thaw cycles
DESCRIPTION:	WFDC5 is a member of the WAP-type four-disulfide core (WFDC) domain family. Most WFDC proteins contain only one WFDC domain, whereas WFDC5 contains two WFDC domains. The WFDC domain, or WAP signature motif, contains eight cysteines forming four disulfide bonds at the core of the protein, and functions as a protease inhibitor. Most WFDC gene members are localized to chromosome 20q12-q13 in two clusters: centromeric and telomeric. This gene belongs to the centromeric cluster.
APPLICATION:	WB, ELISA, IHC



Immunohistochemistry on squamous cancer lung tissue sections using anti-WFDC5-WAP antibody on formalin-fixed paraffin-embedded



Western blot analysis of WFDC5 Antibody in Jurkat cell lysate

RELATED PRODUCTS

- Cathepsin L Antibody (Cat. No. 6669-100)
- Procathepsin K Antibody (Cat. No. 6647-100)
- Procathepsin K Antibody (Cat. No. 6667-100)
- Cathepsin B Antibody (Cat. No. 3190-100)
- Cathepsin D Antibody (Cat. No. 3191R-100)

FOR RESEARCH USE ONLY! Not to be used on humans.