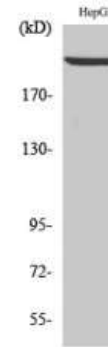


Anti-Laminin β 1 Antibody

CATALOG NO:	A1244-100 100 μ l
ALTERNATE NAMES:	LAMB1; Laminin subunit beta-1; Laminin B1 chain; Laminin-1 subunit beta; Laminin-10 subunit beta; Laminin-12 subunit beta; Laminin-2 subunit beta; Laminin-6 subunit beta; Laminin-8 subunit beta
AMOUNT:	100 μ l (1 mg/ml)
IMMUNOGEN:	Synthesized peptide derived from the C-terminal region of human Laminin β -1 at AA range: 1690-1770
MOL. WEIGHT	220 kDa
HOST/ISOTYPE:	Rabbit IgG
SPECIES REACTIVITY:	Human, mouse
SPECIFICITY:	Laminin β -1 Polyclonal Antibody detects endogenous levels of Laminin β -1 protein
PURIFICATION:	The antibody was affinity-purified from rabbit antiserum by affinity-chromatography using epitope-specific immunogen
FORM:	Liquid
FORMULATION:	Liquid in PBS containing 50% glycerol, 0.5% BSA and 0.02% sodium azide
STORAGE CONDITIONS:	Store at -20°C. Avoid repeated freeze/thaw cycles.
DESCRIPTION:	Binding to cells via a high affinity receptor, laminin is thought to mediate the attachment, migration and organization of cells into tissues during embryonic development by interacting with other extracellular matrix components. Involved in the organization of the laminar architecture of cerebral cortex. It is probably required for the integrity of the basement membrane/glia limitans that serves as an anchor point for the endfeet of radial glial cells and as a physical barrier to migrating neurons. Radial glial cells play a central role in cerebral cortical development, where they act both as the proliferative unit of the cerebral cortex and a scaffold for neurons migrating toward the pial surface.
APPLICATION:	WB 1:500-1:2000; IHC 1:100-1:300; IF 1:200-1:1000; ELISA 1:10000

Note: This information is only intended as a guide. The optimal dilutions must be determined by the user.



Western Blot analysis of HepG2 cell lysate using Laminin beta-1 Polyclonal Antibody

RELATED PRODUCTS:

- Fibronectin Antibody (**Cat. No. 3630-100**)
- Cathepsin K Antibody (**Cat. No. 3588-100**)
- Cyr61/CCN1 Antibody (Clone 365108) (**Cat. No. 6695-50**)
- Cyr61/CCN1 Antibody (Clone 466305) (**Cat. No. 6696-50**)

FOR RESEARCH USE ONLY! Not to be used on humans.