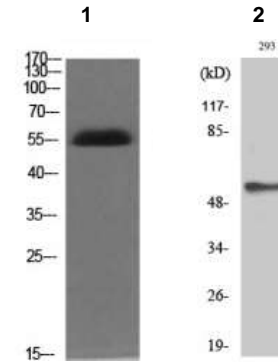


## Phospho-Akt2 (Ser474) Antibody

<b>CATALOG NO:</b>	A1246-100 100 µl
<b>ALTERNATE NAMES:</b>	AKT2; RAC-beta serine/threonine-protein kinase; Protein kinase Akt-2; Protein kinase B beta; PKB beta; RAC-PK-beta
<b>AMOUNT:</b>	100 µl (1 mg/ml)
<b>IMMUNOGEN:</b>	Synthesized peptide derived from human Akt2 around the phosphorylation site of S474
<b>MOL. WEIGHT</b>	60 kDa
<b>HOST/ISOTYPE:</b>	Rabbit IgG
<b>SPECIES REACTIVITY:</b>	Human, mouse, rat
<b>SPECIFICITY:</b>	Phospho-Akt2 (S474) Polyclonal Antibody detects endogenous levels of Akt2 protein only when phosphorylated at S474.
<b>PURIFICATION:</b>	The antibody was affinity-purified from rabbit antiserum by affinity-chromatography using epitope-specific immunogen
<b>FORM:</b>	Liquid
<b>FORMULATION:</b>	Liquid in PBS containing 50% glycerol, 0.5% BSA and 0.02% sodium azide
<b>STORAGE CONDITIONS:</b>	Store at -20°C. Avoid repeated freeze/thaw cycles.
<b>DESCRIPTION:</b>	AKT2 is a putative oncogenic protein belonging to a subfamily of serine/threonine kinases containing SH2-like (Src homology 2-like) domains. Furthermore, AKT2 was shown to be amplified and overexpressed in 2 of 8 ovarian carcinoma cell lines and 2 of 15 primary ovarian tumors. Overexpression of AKT2 contributes to the malignant phenotype of a subset of human ductal pancreatic cancers. AKT2 is a general protein kinase capable of phosphorylating several known proteins.
<b>APPLICATION:</b>	WB 1:500-1:2000; IHC 1:100-1:300; ELISA 1:20000

**Note:** This information is only intended as a guide. The optimal dilutions must be determined by the user.



**Western Blot analysis using Phospho-Akt2 (Ser474) Antibody in (1) Mouse brain (2) 293 cell lysate**

### RELATED PRODUCTS:

- Akt2 Antibody (Cat. No. 3155-100)
- Akt2, Active (Cat. No. 7702-100)

**FOR RESEARCH USE ONLY! Not to be used on humans.**