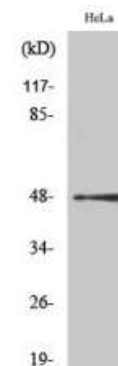


## Phospho-AP-1 (Ser63) Antibody

<b>CATALOG NO:</b>	A1249-100 100 µl
<b>ALTERNATE NAMES:</b>	JUN; Transcription factor AP-1; Activator protein 1; AP1; Proto-oncogene c-Jun; V-jun avian sarcoma virus 17 oncogene homolog; p39
<b>AMOUNT:</b>	100 µl (1 mg/ml)
<b>IMMUNOGEN:</b>	Synthesized peptide derived from human AP-1 around the phosphorylation site of S63 (10-90aa)
<b>MOL. WEIGHT</b>	48 kDa
<b>HOST/ISOTYPE:</b>	Rabbit IgG
<b>SPECIES REACTIVITY:</b>	Human, Mouse, Rat
<b>SPECIFICITY:</b>	Phospho-AP-1 (S63) Polyclonal Antibody detects endogenous levels of AP-1 protein only when phosphorylated at S63.
<b>PURIFICATION:</b>	The antibody was affinity-purified from rabbit antiserum by affinity-chromatography using epitope-specific immunogen
<b>FORM:</b>	Liquid
<b>FORMULATION:</b>	Liquid in PBS containing 50% glycerol, 0.5% BSA and 0.02% sodium azide
<b>STORAGE CONDITIONS:</b>	Store at -20°C. Avoid repeated freeze/thaw cycles.
<b>DESCRIPTION:</b>	Transcription factor that recognizes and binds to the enhancer heptamer motif 5'-TGA[CG]TCA-3'. Promotes activity of NR5A1 when phosphorylated by HIPK3 leading to increased steroidogenic gene expression upon cAMP signaling pathway stimulation. Involved in activated KRAS-mediated transcriptional activation of USP28 in colorectal cancer (CRC) cells. Binds to the USP28 promoter in colorectal cancer (CRC) cells
<b>APPLICATION:</b>	WB 1:500-1:2000; IHC 1:100-1:300; ELISA 1:20000

**Note:** This information is only intended as a guide. The optimal dilutions must be determined by the user.



Western Blot analysis of HeLa cells using Phospho-AP-1 (Ser63) Polyclonal Antibody

### RELATED PRODUCTS:

- c-Jun antibody (**Cat. No. 3009-100**)
- c-jun (Human) ELISA Kit (**Cat. No. K4198-100**)
- Raf1 Antibody (**Cat. No. 3116-100**)
- Adenosine Antibody (**Cat. No. 6652--100**)
- EDG4 Antibody (N-term) (**Cat. No. A1056-100**)
- BAR2 Antibody (S261) (**Cat. No. A1057-100**)
- SMO Antibody (Center) (**Cat. No. A1058-100**)
- 5-Hydroxytryptamine Receptor 1A Antibody (**Cat. No. A1059-100**)
- AGTR2 Polyclonal Antibody (**Cat. No. A1063-50**)
- CRTH2 Polyclonal Antibody (**Cat. No. A1064-50**)

**FOR RESEARCH USE ONLY! Not to be used on humans.**