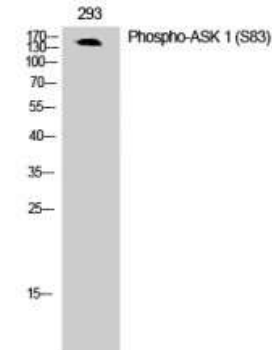


## Phospho-ASK 1 (Ser83) Antibody

<b>CATALOG NO:</b>	A1251-100 100 µl
<b>ALTERNATE NAMES:</b>	Apoptosis signal-regulating kinase 1, Mitogen-activated protein kinase kinase 5, ASK-1, MAPK/ERK kinase kinase 5, MEK kinase 5, MEKK 5
<b>AMOUNT:</b>	100 µl
<b>IMMUNOGEN:</b>	Synthesized peptide derived from human ASK 1 around the phosphorylation site of S83. AA range: 20-100
<b>MOL. WEIGHT</b>	155 kDa
<b>HOST/ISOTYPE:</b>	Rabbit IgG
<b>SPECIES REACTIVITY:</b>	Human
<b>PURIFICATION:</b>	The antibody was affinity-purified from rabbit serum by affinity-chromatography using specific immunogen.
<b>FORM:</b>	Liquid
<b>FORMULATION:</b>	PBS containing 50% glycerol, 0.5% BSA and 0.02% sodium azide
<b>STORAGE CONDITIONS:</b>	Store at -20°C. Avoid repeated freeze/thaw cycles.
<b>DESCRIPTION:</b>	Serine/threonine kinase which acts as an essential component of the MAP kinase signal transduction pathway. Plays an important role in the cascades of cellular responses evoked by changes in the environment. Mediates signaling for determination of cell fate such as differentiation and survival. Plays a crucial role in the apoptosis signal transduction pathway through mitochondria-dependent caspase activation. MAP3K5/ASK1 is required for the innate immune response, which is essential for host defense against a wide range of pathogens. Mediates signal transduction of various stressors like oxidative stress as well as by receptor-mediated inflammatory signals, such as the tumor necrosis factor (TNF) or lipopolysaccharide (LPS). Once activated, acts as an upstream activator of the MKK/JNK signal transduction cascade and the p38 MAPK signal transduction cascade through the phosphorylation and activation of several MAP kinase kinases like MAP2K4/SEK1, MAP2K3/MKK3, MAP2K6/MKK6 and MAP2K7/MKK7. These MAP2Ks in turn activate p38 MAPKs and c-jun N-terminal kinases (JNKs). Both p38 MAPK and JNKs control the transcription factors activator protein-1 (AP-1).
<b>APPLICATION:</b>	WB 1:500-1:2000 ELISA 1:5000-1:20000 IHC 1:100-1:300

**Note:** This information is only intended as a guide. The optimal dilutions must be determined by the user.



**Western Blot (WB) analysis of 293 cells using Phospho-ASK 1 (S83) Polyclonal Antibody.**

### RELATED PRODUCTS:

- Phospho Alpha-synuclein (Tyr125) Antibody (**Cat. No. A1219-100**)
- Phospho (Ser31) Tyrosine Hydroxylase Antibody (**Cat. No. 3613-200**)
- Phospho (Ser19) Tyrosine Hydroxylase Antibody (**Cat. No. 3612-100**)
- Phospho (Tyr1472) NMDA NR2B Antibody (**Cat. No. 3616-100**)
- Phospho CREB (Ser129) Antibody (**Cat. No. A1222-100**)
- Phospho GAP43 (Ser41) Antibody (**Cat. No. A1220-100**)
- Phospho-Akt2 (Ser474) Antibody (**Cat. No. A1246-100**)
- Phospho-Akt1 (Ser246) Antibody (**Cat. No. A1245-100**)
- Phospho-MNK1 (Thr250) Antibody (**Cat. No. A1159-50**)
- Phospho-NIFK (Thr234) Antibody (**Cat. No. A1157-50**)

**FOR RESEARCH USE ONLY! Not to be used on humans.**