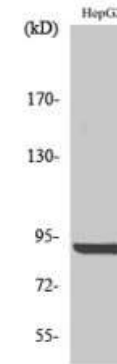


Phospho-Calnexin (Ser583) Antibody

CATALOG NO:	A1252-100 100 µl
ALTERNATE NAMES:	Calnexin, IP90, Major histocompatibility complex class I antigen-binding protein p88, p90
AMOUNT:	100 µl
IMMUNOGEN:	Synthesized peptide derived from human Calnexin around the phosphorylation site of S583. AA- 520-600
MOL. WEIGHT	90 kDa
HOST/ISOTYPE:	Rabbit IgG
SPECIES REACTIVITY:	Human, Mouse, Rat
SPECIFICITY:	Phospho-Calnexin (Ser583) Polyclonal Antibody detects endogenous levels of Calnexin protein only when phosphorylated at S583.
PURIFICATION:	The antibody was affinity-purified from rabbit serum by affinity-chromatography using specific immunogen.
FORM:	Liquid
FORMULATION:	PBS containing 50% glycerol, 0.5% BSA and 0.02% sodium azide
STORAGE CONDITIONS:	Store at -20°C. Avoid repeated freeze/thaw cycles.
DESCRIPTION:	Calcium-binding protein that interacts with newly synthesized glycoproteins in the endoplasmic reticulum. It may act in assisting protein assembly and/or in the retention within the ER of unassembled protein subunits. It seems to play a major role in the quality control apparatus of the ER by the retention of incorrectly folded proteins. Associated with partial T-cell antigen receptor complexes that escape the ER of immature thymocytes, it may function as a signaling complex regulating thymocyte maturation. Additionally it may play a role in receptor-mediated endocytosis at the synapse.
APPLICATION:	WB 1:500-1:2000; IHC 1:100-1:300; IF 1:200-1:1000; ELISA 1:5000

Note: This information is only intended as a guide. The optimal dilutions must be determined by the user.



Western Blot (WB) analysis of HepG2 cells using Phospho-Calnexin (S583) Polyclonal Antibody

RELATED PRODUCTS:

- Phospho Alpha-synuclein (Tyr125) Antibody (**Cat. No. A1219-100**)
- Phospho (Ser31) Tyrosine Hydroxylase Antibody (**Cat. No. 3613-200**)
- Phospho (Ser19) Tyrosine Hydroxylase Antibody (**Cat. No. 3612-100**)
- Phospho (Tyr1472) NMDA NR2B Antibody (**Cat. No. 3616-100**)
- Phospho CREB (Ser129) Antibody (**Cat. No. A1222-100**)
- Phospho GAP43 (Ser41) Antibody (**Cat. No. A1220-100**)
- Phospho-Akt2 (Ser474) Antibody (**Cat. No. A1246-100**)
- Phospho-Akt1 (Ser246) Antibody (**Cat. No. A1245-100**)
- Phospho-MNK1 (Thr250) Antibody (**Cat. No. A1159-50**)
- Phospho-NIFK (Thr234) Antibody (**Cat. No. A1157-50**)

FOR RESEARCH USE ONLY! Not to be used on humans.