

Phospho-Caveolin-1 (Tyr14) Antibody

CATALOG NO:	A1254-100 100 µl
ALTERNATE NAMES:	Caveolin-1, CAV1, CAV
AMOUNT:	100 µl
IMMUNOGEN:	Synthesized peptide derived from human Caveolin-1 around the phosphorylation site of Tyr14. AA: 1-80
MOL. WEIGHT	20 kDa
HOST/ISOTYPE:	Rabbit IgG
SPECIES REACTIVITY:	Human, Mouse, Rat
SPECIFICITY:	Phospho-Caveolin-1 (Y14) Polyclonal Antibody detects endogenous levels of Caveolin-1 protein only when phosphorylated at Tyr14.
PURIFICATION:	The antibody was affinity-purified from rabbit serum by affinity-chromatography using specific immunogen.
FORM:	Liquid
FORMULATION:	PBS containing 50% glycerol, 0.5% BSA and 0.02% sodium azide
STORAGE CONDITIONS:	Store at -20°C. Avoid repeated freeze/thaw cycles.
DESCRIPTION:	May act as a scaffolding protein within caveolar membranes. Interacts directly with G-protein alpha subunits and can functionally regulate their activity (By similarity). Involved in the costimulatory signal essential for T-cell receptor (TCR)-mediated T-cell activation. Its binding to DPP4 induces T-cell proliferation and NF-kappa-B activation in a T-cell receptor/CD3-dependent manner. Recruits CTNBN1 to caveolar membranes and may regulate CTNBN1-mediated signaling through the Wnt pathway. Negatively regulates TGFB1-mediated activation of SMAD2/3 by mediating the internalization of TGFBR1 from membrane rafts leading to its subsequent degradation.
APPLICATION:	WB 1:500-1:2000; ELISA 1:5000
	Note: This information is only intended as a guide. The optimal dilutions must be determined by the user.

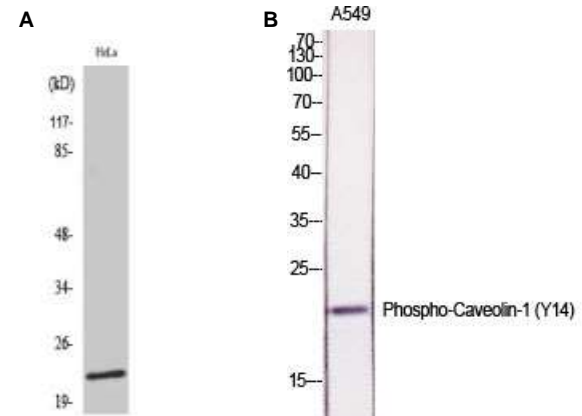


Fig A. Western Blot (WB) analysis of HeLa cells using Phospho-Caveolin-1 (Y14) Polyclonal Antibody

Fig B. Western Blot (WB) analysis of A549 cells using Phospho-Caveolin-1 (Y14) Polyclonal Antibody

RELATED PRODUCTS:

- Phospho Alpha-synuclein (Tyr125) Antibody (**Cat. No. A1219-100**)
- Phospho (Ser31) Tyrosine Hydroxylase Antibody (**Cat. No. 3613-200**)
- Phospho (Ser19) Tyrosine Hydroxylase Antibody (**Cat. No. 3612-100**)
- Phospho (Tyr1472) NMDA NR2B Antibody (**Cat. No. 3616-100**)
- Phospho CREB (Ser129) Antibody (**Cat. No. A1222-100**)
- Phospho GAP43 (Ser41) Antibody (**Cat. No. A1220-100**)
- Phospho-Akt2 (Ser474) Antibody (**Cat. No. A1246-100**)
- Phospho-Akt1 (Ser246) Antibody (**Cat. No. A1245-100**)
- Phospho-MNK1 (Thr250) Antibody (**Cat. No. A1159-50**)
- Phospho-NIFK (Thr234) Antibody (**Cat. No. A1157-50**)

FOR RESEARCH USE ONLY! Not to be used on humans.