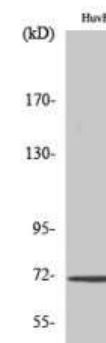


Phospho-Cdc25A (Ser75) Antibody

CATALOG NO:	A1257-100 100 µl
ALTERNATE NAMES:	M-phase inducer phosphatase 1, Dual specificity phosphatase Cdc25A, CDC25A
AMOUNT:	100 µl
IMMUNOGEN:	Synthesized peptide derived from human Cdc25A around the phosphorylation site of S75. AA: 30-110
MOL. WEIGHT	59 kDa
HOST/ISOTYPE:	Rabbit IgG
SPECIES REACTIVITY:	Human, Mouse, Rat
SPECIFICITY:	Phospho-Cdc25A (S75) Polyclonal Antibody detects endogenous levels of Cdc25A protein only when phosphorylated at S75.
PURIFICATION:	The antibody was affinity-purified from rabbit serum by affinity-chromatography using specific immunogen.
FORM:	Liquid
FORMULATION:	PBS containing 50% glycerol, 0.5% BSA and 0.02% sodium azide
STORAGE CONDITIONS:	Store at -20°C. Avoid repeated freeze/thaw cycles.
DESCRIPTION:	Tyrosine protein phosphatase which functions as a dosage-dependent inducer of mitotic progression. Directly dephosphorylates CDK1 and stimulates its kinase activity. Also dephosphorylates CDK2 in complex with cyclin E, in vitro.
APPLICATION:	WB 1:500-1:2000 IHC 1:100-1:300 ELISA 1:5000
	Note: This information is only intended as a guide. The optimal dilutions must be determined by the user.



Western Blot (WB) analysis of HuvEc cells using Phospho-Cdc25A (S75) Polyclonal Antibody.

RELATED PRODUCTS:

- Phospho Alpha-synuclein (Tyr125) Antibody (**Cat. No. A1219-100**)
- Phospho (Ser31) Tyrosine Hydroxylase Antibody (**Cat. No. 3613-200**)
- Phospho (Ser19) Tyrosine Hydroxylase Antibody (**Cat. No. 3612-100**)
- Phospho (Tyr1472) NMDA NR2B Antibody (**Cat. No. 3616-100**)
- Phospho CREB (Ser129) Antibody (**Cat. No. A1222-100**)
- Phospho GAP43 (Ser41) Antibody (**Cat. No. A1220-100**)
- Phospho-Akt2 (Ser474) Antibody (**Cat. No. A1246-100**)
- Phospho-Akt1 (Ser246) Antibody (**Cat. No. A1245-100**)
- Phospho-MNK1 (Thr250) Antibody (**Cat. No. A1159-50**)
- Phospho-NIFK (Thr234) Antibody (**Cat. No. A1157-50**)

FOR RESEARCH USE ONLY! Not to be used on humans.